

2022/2023

GASCOYNE MURCHISON

Adventure Awaits

Travel Planner

YALGOO AND PAYNES FIND ◯ MURCHISON SETTLEMENT ◯ MOUNT MAGNET ◯ SANDSTONE
CUE ◯ MEEKATHARRA ◯ GASCOYNE JUNCTION ◯ WILUNA

In this edition

TRAVEL TIPS AND CONDITIONS	4
EVENTS CALENDAR	5
REGION MAP	6

Welcome

TO THE GASCOYNE
MURCHISON REGION



The giant Mount Augustus looms above its surrounding landscape, twice the size of Uluru (Ayers Rock), and stands majestically as the largest rock in the world. The monolith red rock is shrouded in Aboriginal mythology and etched in carvings, believed to be pre-Dreamtime.

Similarly spectacular landscape is evident at the Kennedy Range National Park. This huge elevation of breathtaking cliff face, gorge and rock is between 10 kilometres and 25 kilometres wide and covers 75 kilometres in a north-south direction.

The Gascoyne-Murchison region is also home to vast cattle and sheep stations, established with a pioneering spirit that refused to give in to some of the most unforgiving land on earth, where water is scarce and survival is a challenge.

TOP 10 MUST SEE

Everything
is Big Here™

1

Visit Mt Augustus, the world's largest rock, with aboriginal cave etchings!

2

Camp, park your van, or stay with a family in a station stay - true Outback hospitality.

3

Experience carpets of everlasting wildflowers.

4

Explore the exciting Gascoyne Murchison Outback Pathways drive routes.

5

Discover and camp at the awesome Kennedy Range National Park.

ROAD-TRIPS

Road to the Rock	8
Miners Pathway	10
Kingsford Smith Mail Run	12
Wool Wagon Pathway	14
Murchison Geo Itineraries	16

ATTRACTIONS

Geology and Astronomy	19
Wildflowers	20
Aboriginal Experiences	21

WHERE TO STAY

22

CHARACTER-FILLED TOWNS

Yalgoo and Pynes Find	24
Murchison Settlement	26
Mount Magnet	28
Sandstone	30
Cue	32
Meekatharra	34
Gascoyne Junction	36
Wiluna	38

A network of these cattle and sheep stations welcome guests to stay and a chance to experience the unique lifestyle. They offer a range of accommodation including homesteads, self-contained cottages, shearers quarters, caravan and camp sites and even sleeping in a swag under the brilliant star-filled sky. In this extensive region, the night skies are clear, bright and endless.

This outback area is dotted with dozens of tiny, character-filled towns, each showing a distinctive personality that has contributed to their survival.

In the wildflower season, the region is a riot of colour as the rains bring forth a blanket of wildflowers that stretch as far as the eye can see.

The Murchison is particularly well-known for its stunning carpets of everlastings that cover entire fields in pinks, whites and yellows.

One of the best ways to explore the Gascoyne-Murchison is by following one or more of the Outback Pathways. These self drive pathways criss-cross the region and showcase the many natural wonders of this magical landscape.

At the time of printing, March 2022, all information was correct. We encourage you to check with local business and shire councils prior to travel.

LOOK OUT FOR

Bungarra's



Look out for Billy the Bungarra on warmer days! A native sand goanna common to the area.

6

Visit Wiluna, start of the famous Canning Stock Route and Gunbarrel Highway.

7

Take time to look at the million star night sky in the Gascoyne-Murchison.

8

Check the events calendar and join the locals in some true outback fun.

9

Be there for the Lander horse races fun in a true outback environment.

10

Make sure you call in to local galleries to see arts, crafts and aboriginal products.





In an Emergency

If well planned, your trip should go smoothly and safely, but, if you get into difficulty, there are a few key things to remember:

- If your car breaks down or you become lost, never leave your vehicle; use it for shade and shelter and remember it is easier to locate a missing vehicle than a missing person in the vast Outback.
- If you become lost while out walking, sit down and study your maps; determine where you came from and slowly take that route back; if you can't find the way back, move to higher ground.
- Light a small smoky fire with green leaves during the day and a small bright fire with dry materials at night.

Travel Tips

Drive safely and follow these tips: The Gascoyne Murchison offers spectacular scenery and the chance for great adventure. But it is important to be ready for the rigours of travelling in isolated areas.

PREPARATION

- Make sure you have good quality maps and plan your route
- Always tell someone where you are going, your return dates and your itinerary.
- Check road conditions before departure as rain can make some roads impassable. Never attempt to cross flooded bridges or causeways; most flash floods recede within 24 hours
- Be careful of how much you pack on your roof rack; a heavy load on top increases the chances of a roll-over
- Carry extra food, fuel, vehicle spares, and water. Store water in various containers instead of one large tank and check for leaks
- Make sure you are familiar with first aid and pack a first aid kit
- Wear clothing suitable for the climate; wear good walking shoes, hat and sun cream; take warm clothes for the evenings during winter.

SAFETY ON UNSEALED ROADS

- Reduce speed on unsealed roads because traction often decreases and braking distances increase
- Beware of hidden dangers (dust filled holes, soft and sloping edges); when overtaking, beware that dust obscures vision and dangers may be hidden
- Slow down before making a turn to avoid sliding
- Stock and wildlife: beware of sheep, cattle, kangaroos, emus. Dawn, dusk and night driving are the most dangerous time to travel
- Road trains: always give trucks and road trains (which can be up to 50 metres in length) plenty of room; if overtaking, allow at least 1km of clear road ahead
- Always travel with two spare tyres and ensure you are carrying the equipment to change a flat tyre.

GENERAL INFORMATION FOR OUTBACK TRAVELLERS

Sacred Sites: there are a number of places or objects that hold special significance for Aboriginal people; visitors are welcome but respect must be shown for these sites; some are protected by law and there are penalties for trespassing; permit applications and general enquiries must be directed in writing to the relevant Land Council.

Truck parking bays: never park in truck parking bays which are provided exclusively for the use of trucks and road trains; these rigs need room to manoeuvre their trailers and often need to run noisy refrigeration units. Rest areas are provided for regular fatigue breaks and there are camping and caravan park facilities for overnight stops

Pets: dogs and cats cannot be taken into National Parks. Please be advised that 1080 poison baiting programs are carried out on Pastoral Land and Department of Parks and Wildlife properties to control wild dogs, foxes and feral cats. Exercise caution with your pet when visiting these areas.



Events and climate

Summer

December, January, February Average Temperature 39° C / 102° F

Please check out our website for events in December - February and into 2023.

Autumn

March, April, May Average Temperature 31° C / 89° F

Gascoyne Dash
28th April – 1st of May 2022
www.gasdash.com

Gascoyne River Music Festival
13th to 15th of May 2022
www.gascoyneinmay.com.au

Winter

June, July, August Average Temperature 22° C / 72° F

Murchison Polocrosse
9th – 10th July 2022
Murchison Settlement Polocrosse Fields

Junction Races
19th – 21st August 2022
www.junctionraces.com

Spring

September, October, November Average Temperature 31° C / 89° F

Mullewa Wildflower Festival
25th – 28th of August 2022

**Mount Augustus Australia's
Biggest Barbecue**
3rd September 2022

Mount Magnet Races
17th September 2022

Mount Magnet Astro Rocks Fest
16th – 18th September 2022
www.mtmagnet-astorocks.com

**Meeka Outback Festival
and Barramundi Festival**
23rd – 25th September 2022

Landor Races
30th September to 3rd October 2022
www.landor.net.au

Yalgoo Emu Cup
October 2022

Region Map



MUST SEE

Burringurrah



MT AUGUSTUS NATIONAL PARK



At about twice the size of Uluru (Ayers Rock), it is the biggest rock in the world. Known by the local Wajarri aboriginal people as Burringurrah, it rises spectacularly over the surrounding plain, and at 750 metres, is visible for more than 160 kilometres. Interesting rock formations, caves and Aboriginal engravings are found on many parts of the rock that have been untouched for thousands of years. Emu Hill Lookout

is a good location from which to take wonderful photographs of the Mount, with sunset usually the most colourful.

There are many things to see and do around Mount Augustus. Burringurrah Drive is a 49 kilometre circuit providing views of the changing faces of the rock, and on this drive you have access to all feature sites. The drive is suitable for conventional two wheel drive vehicles.

MUST SEE

Scenic Helicopter FLIGHTS

Scenic Helicopter Flights of the rock are available with Coral Coast Helicopters.

To book call 0474132918

MUST SEE

Mundatharrda



KENNEDY RANGE NATIONAL PARK

Kennedy Range National Park offers spectacular scenery of gorges and precipitous faces, with a vast plateau of ancient dune fields on top of the range. Lying roughly 150km east of Carnarvon, the area retains a wilderness feeling, and camping beneath the stark sandstone cliffs is an experience not to be missed.

The Aboriginal Inggarda name for the range is Mundoo Thuda. Artefacts found in the park provide evidence of the long history Aboriginal people have with the

area. The best times to visit include April to June for beautiful autumn and winter weather. Otherwise July, August and September when wildflowers are in full bloom, transforming the landscape into a mass of colour. The developed visitor sites lie on the eastern side of the range and can be accessed by the Ullawarra Road north of Gascoyne Junction. Water should be taken and vehicles should be in sound condition. Avoid walking in this area in the hottest part of the day.

The Park is run by Parks and Wildlife WA, camping fees apply. Toilets are provided but there is no water available. To assist visitors, Parks and Wildlife Campground Hosts are usually based at the campground from May to September.



Road to the Rock

9 days

If you're looking for a rugged, authentic outback escape, with some of the most renowned 4WD trails in the world, the Gascoyne Murchison needs to be on your bucket list. The midpoint of this epic 9-day itinerary is Mount Augustus. It is located within Mount Augustus National Park, a lush outback paradise with swimming holes, ancient rock art, buzzing tourist park and outback steakhouse and bar. This route requires an SUV or 4WD and will take you through some gorgeous outback towns, incredible natural wonders, amazing hikes and trails, and in season, through a myriad of wildflowers.



DAY 1

Perth to Mount Magnet

Set your GPS and press go on a road-tripping playlist: today is the beginning of your Road to the Rock adventure! Hold onto your hunger until Payne's Find, where you'll find a classic outback roadhouse dripping with charisma. You're staying further up the road tonight at Mount Magnet where you can grab dinner at one of the pubs.

DAY 2

Mount Magnet to Cue

You're hitting the road for Cue – before you leave town visit the The Granites – a striking set of rocky outcrops reaching 15 metres high, and a site of great cultural significance to the Badimia people.

Check-in to your chosen accommodation in Cue and hop back in the car: visit the abandoned ghost town of Big Bell and then continue on to discover Walga Rock - the rock hides an ancient gallery of Wajarri rock paintings.

DAY 3

Cue to Meekatharra to Mount Augustus

It's the day you've been waiting for – you're off to see the world's biggest rock! Explore Meekatharra along the way, it'll be your last chance to refuel and grab snacks before turning off the bitumen for today's ultimate destination. Visit Peace Gorge along the way.

DAY 4 AND 5

Mount Augustus (Burringurrah)

There are several walking trails in and around the rock, ask at the tourist park for recommendations. Take yourself for a swim at Cattle Pool. For sunset, drive to Emu Hill Lookout. For the best experience, consider taking the Summit Trail but remember to start early and pack lots of water – this is a challenging hike.

DAY 6 AND 7

Mount Augustus to Gascoyne Junction to Wooleen Station

If it's Spring, prepare your camera: you'll see plenty of flowers along the way to Kennedy Range National Park. With a magnificent cliff face that extends for several kilometres, it would be easy to spend several days exploring.

You'll spend the night Gascoyne Junction where you can enjoy dinner at the Pub. The next day you'll be making the drive down to Wooleen Station. Stop in at Errabbiddy bluff along the way!

DAY 8 AND 9

Wooleen Station to Perth

Take advantage of the many activities on this working cattle station. Borrow a mountain bicycle and set off on one of the signposted trails, join the sunset tour or take a picnic to Yewlands Pool for birdwatching. After you've completely used up your camera's memory card, hop back in the car and make your way back to Perth via Coleseam National Park for more wildflower spotting.

SCAN THE QR CODE

Road to the Rock
YouTube Video





Big Bell



Cue

ROAD TO THE ROCK

Wildflowers

July until
September



The Granites



Wooleen River





Miner's Pathway

4 days

Capture the prospecting spirit through the Murchison's gold rush days. In the late 1800s towns like Mount Maganet, Cue, Meekatharra and Sandstone rocketed to the forefront of WA's gold boom!



DAY 1

Perth / Mount Magnet / Cue / Meekatharra

437km, 5hrs or 775km, 8hrs

Set off from Perth towards Mount Magnet. Remnants of Mount Magnet's gold mining history are evident in museum and heritage walk trails - but you'll find the mining industry is still alive and well. From here, head north to Cue, famous for its stunning colonial architecture. Overnight in Mount Magnet, Cue or Meekatharra.

DAY 2

Meekatharra / Sandstone

221km, 2.5 hours

Hit the dirt road south east from Meeka to Sandstone, rock formations contrast with the rust stained sandstone giving the town its name. Stop at London Bridge, an ancient rock formation that was once wide enough for a horse and sulky to cross. Stay overnight in the National Hotel, built nearly 100 years ago, or check into the local caravan park.

DAY 3

Sandstone / Yalgoo

280km, 3 hours

The journey weaves through the vast open landscape, crossing back through Mount Magnet to the town of Yalgoo. Just south of Yalgoo is Joker's Tunnel, carved through solid rock by early prospectors. Overnight at one of the nearby sheep stations offering accommodation, or hotel, caravan park, campground in town.

DAY 4

Yalgoo / Paynes Find / Perth

260km, 3hrs or 697km, 7hrs

Head south east across a dirt road to Paynes Find. Make time to visit the Gold Battery and Museum, which showcases the region's mining, pastoral and sandalwood industries before perhaps continuing to Perth.

ALTERNATE ROUTE:

Consider travelling from Yalgoo to Morawa to experience station life and Wreath Flowers (*Lechenaultia macrantha*). Follow the 'Wildflower Way' home.

GASCOYNE • MURCHISON
**OUTBACK
PATHWAYS**

To purchase the guidebook
or for further information visit
www.outbackpathways.com.au



Jokers Tunnel, Yalgoo



MINER'S PATHWAY

Peace Gorge



Big Bell, Cue

Wildflowers

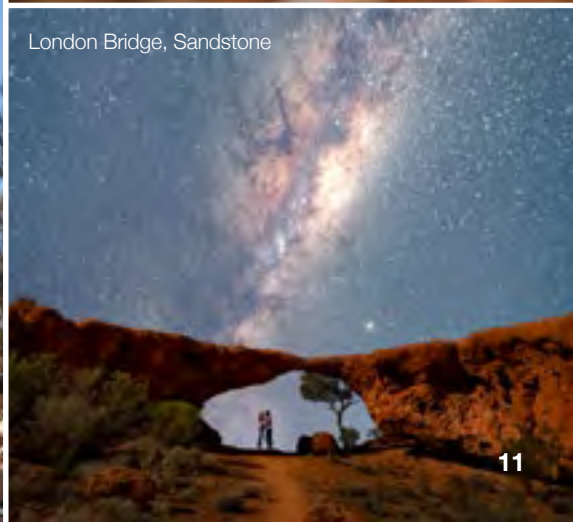
July until
September



Old Hospital, Cue



Prospecting in Yalgoo



London Bridge, Sandstone

KINGSFORD SMITH
MAIL RUN

Kingsford Smith Mail Run

4 days

For a slice of Aussie outback history, trace the original 1920s overland mail run from Carnarvon to Meekatharra and the pioneering spirit of Australia's famous pilot, Charles Kingsford Smith.



DAY 1

Carnarvon / Gascoyne Junction

177km, 2 hours

From the historic port town of Carnarvon head east along the sealed road through massive cattle stations to Gascoyne Junction. Enjoy lunch at the new Junction Pub and settle into a motel room or campsite for the evening.

DAY 2

Gascoyne Junction / Kennedy Range / Gascoyne Junction

150km, 2 hours

Take a day trip to Kennedy Range N.P. approx. 60km north and see numerous gorges. The Aboriginal name is Mundoo Thuda. Artefacts found point to the long history Aboriginal people have with the area. Bring takeout lunch from the Junction, return to overnight in Gascoyne Junction.

DAY 3

Gascoyne Junction / Mt Augustus

320km, 3.5 hours

Set off for Mt Augustus, a massive monoclone twice the size of Uluru and enjoy the stunning Outback scenery along the way. On arrival take time to settle in and watch the sunset over the 1,750 million year old Mount from Emu Hill. Overnight at Mount Augustus Tourist Park - camping and accommodation available.

DAY 4

Mt Augustus / Meekatharra

345km, 4 hours

Spend time exploring the area with rock formations, caves, Aboriginal art and swimming and picnic spots. Depart Mt Augustus, head south to the gold mining town of Meekatharra, via Mt Gould Lockup. Learn about Meeka's history and indigenous heritage, on the Meeka Rangelands Discovery Walk Trail. Stay overnight in one of the hotels or the caravan park.

WILUNA EXTENSION

While in Meeka, why not drive the 182km to Wiluna, start of Canning Stock Route and Gunbarrel Hwy plus take its historic walk trail and view the Tjukurba Aboriginal art gallery.

GASCOYNE - MURCHISON
OUTBACK
PATHWAYS

To purchase the guidebook
or for further information visit
www.outbackpathways.com.au



Gascoyne Junction



Emu Hill, Mt Augustus National Park

Wildflowers

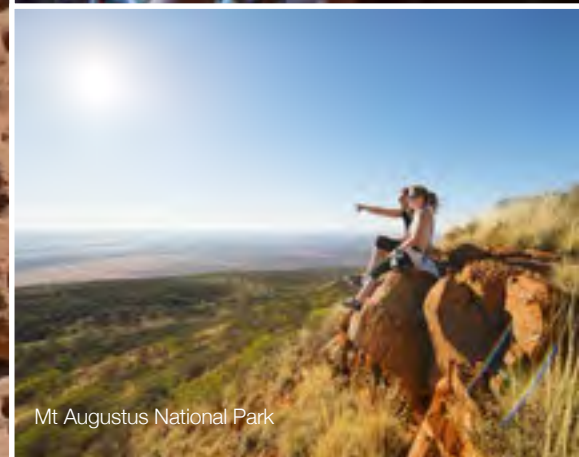
July until
September



Honeycomb Gorge, Kennedy Range National Park



Flintstone Rock, Mt Augustus National Park



Mt Augustus National Park



Kennedy Range National Park

WOOL WAGON
PATHWAY

Wool Wagon Pathway

3 days

Offering the best of the Aussie Outback and amazing marine adventures - this trail travels through WA's legendary sheep and wool country before heading to the coast. Expect star-filled nightskies, vivid sunsets and lively country characters.

DAY 1

Geraldton / Murchison Settlement

355km, 4 hours

Leave the port city of Geraldton behind as you head east through the town of Pindar. Hit the red dirt road and journey through a timeless landscape to Murchison Settlement. Get a taste for life on the land by staying at historic Wooleen Station. Alternatively travel 38kms to Murchison Settlement for great camping and accommodation options, fuel and food.

DAY 2

Murchison Settlement / Gascoyne Junction

300km, 3 hours

Head north, stopping at the natural spring of Bilung Pool. Seashell fossils south of Gascoyne Junction point to the epic history of the natural landscape. Nestled on the banks of the Gascoyne River, a brand new Junction Pub and roadhouse has opened, an ideal place to overnight with bar, accommodation, caravan park & fuel available.

DAY 3

Gascoyne Junction / Exmouth

611km, 7 hours

Take in the beauty of the Kennedy Ranges, which run north from Gascoyne Junction and boast springs, spectacular cliffs, canyons and wildlife. Continue north, deviating towards the coast and the town of Exmouth. Here, coastal breezes and stunning white beaches contrast against the rugged red earth. Explore stunning Ningaloo Reef, from late April to June swim with the biggest fish in the world, the whale shark.

STATION STAY EXTENSION

Break-up the long drive from Gascoyne Junction to Exmouth by dropping in at one of the many Station Stays along the route. Be mindful of the limited fuel stops along the way.

GASCOYNE - MURCHISON
**OUTBACK
PATHWAYS**

To purchase the guidebook
or for further information visit
www.outbackpathways.com.au



En Route to Murchison Settlement



WOOL WAGON PATHWAY

Murchison Settlement



Wooleen River

Wildflowers

July until
September

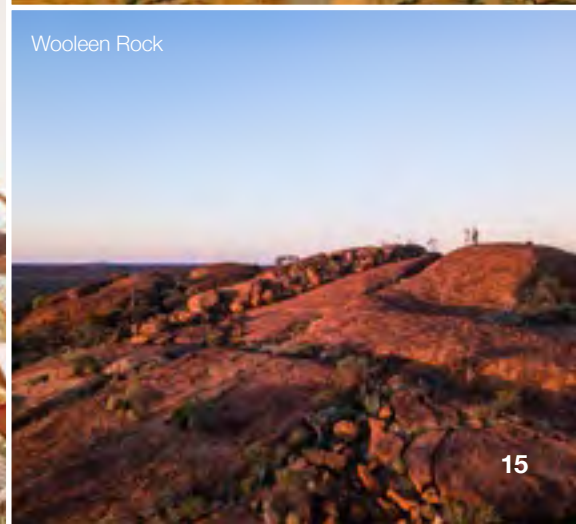


Wooleen



Gascoyne Junction

Wooleen Rock





murchison
georegion
WESTERN AUSTRALIA



Self drive itineraries

ITINERARY 1

Yalgoo - Cue - Mount Magnet

STOP 1

Jokers Tunnel

Take a side trip off the Miners Pathway to explore the gold mining history and geology of the Murchison GeoRegion. Explore Jokers Tunnel, 550 tonnes of rock were removed but only 3 kilograms of gold was found, maybe that's how it got its name!

STOP 2

Dalgaranga Crater and Walga Rock

Make your way from Yalgoo up to Melangata Station. Phone ahead to book the 10am tour of the historic homestead and morning tea. From here check out Dalgaranga Crater and head to Walga Rock. Admire 10,000 years of Aboriginal history and the State's largest gallery of rock art.

STOP 3

Afghan Rock and Garden Granite

Call into Afghan Rock near Cue which was once a popular stop for Afghan cameleers transporting their wares across the Murchison. Visit Garden Granite Rock, the site of a former gold rush market garden. Continue down to Mt Magnet to see The Amphitheatre.

ITINERARY 2

Meekatharra

STOP 1

Peace Gorge

Peace Gorge, located just west of Meekatharra displays stunning rock formations and views. A great location for spotting birds, lizards and kangaroos that are drawn there for the food and shelter available.

STOP 2

Mount Yagahong

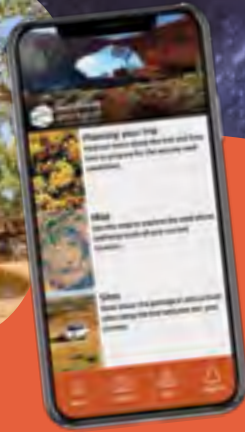
Heading South from Meekatharra, stop for a picnic at Mount Yagahong which has over 70 species of native plants attracting wildlife including goannas and birdlife. The site is said to resemble an emu lying down and is sacred to the Yugunga-Nya people who ask that you enjoy the site but refrain from climbing.

STOP 3

Barlangi Rock

Further south is Barlangi Rock which rises over the Yarrabubba Crater, one of Australia's 27 meteorite impact craters created some 2.23 billion years ago. Evidence of the impact is not easy to see but it's there if you know what to look for.

A number of sites in the Murchison GeoRegion are only accessible with permission or a guide, please call into local visitor centres for more information.



Download the Murchison GeoRegion app.



ITINERARY 3

Murchison

A side trip off the Wool Wagon Pathway in the Murchison provides access to three sites in the Murchison GeoRegion.

STOP 1

Bilung Pool

Bilung Pool, or Birlungardi is one of a few permanent waterholes on the Wooramel River. A great place to picnic or camp overnight. It's a sacred place for the Wajarri people who believe it to be the resting place of Bujida, the Rainbow Snake and suggest that visitors throw sand into the water to show respect.

STOP 2

Errabiddy Bluff

Errabiddy Bluff is an amazing rock formation near Murchison Settlement. The name comes from a Wajarri word meaning 'mouth of bucked teeth' get up close and you'll see why! Drive to the hill opposite Errabiddy where there's a woodfire BBQ for lunch. If time permits, visit Errabiddy Outcamp and learn about Mary and James Watson.

STOP 3

Wooleen Lake

Explore the history on display at the Murchison Museum before heading to Wooleen Lake, a spectacular site in a wetter season with over 140 species of birds. The Lake is only accessible to guests or by daily access fee, phone ahead to arrange your visit.



Geology and Astronomy

Impressive opportunities exist to experience geology and astronomy throughout the Gascoyne Murchison. The bright wide skies and geological marvels offer adventure at every turn.

GEOLOGY

The Gascoyne Murchison region often evokes a feeling of timelessness within visitors. Rugged breakaways, elegant granite outcrops and vast isolated fields of landforms carved at the beginning of time make the landscape a unique and distinctive area for geology. In fact the region is home to the earliest fragments of the earth's crust ever found. Dated at 4.3 billion years old, the zircons are found at Mount Narryer and Jack Hills and are helping scientists to understand how planet Earth formed.

Granites throughout the Gascoyne Murchison are dated at around 3.6 billion years old and are made out of magma that crystalized deep under the earth's surface. These rock formations now remain exposed soaring high above the surrounding plains and appear as a lightcoloured crystalline rock that contains a high proportion of quartz. Rare, but spectacular, orbicular granite can be found near Mount Magnet and was once quarried.

Dalgaranga crater, a small meteorite impact crater 24 m in diameter and 3 m deep, is located west of Cue. Mt Augustus, a geological marvel that soars 1,105 metres above sea level and 715 metres above the surrounding plain is located north-east of Gascoyne Junction. Known to the local indigenous Wajarri community as Burringarruh the rock is in fact a sandstone and quartz massif with the rather awkward geological title of an asymmetrical anticline.

You'll see many geological marvels just travelling the roads within the region. Alternatively venture into a National Park (page 7) or a Station Stay where locals will point you towards some of the most fascinating locations not accessible from the main road. The Gascoyne Murchison is indeed an ancient and geologically captivating landscape.

Dated at

4.3billion

Years old, the region is home to the earliest fragments of the earth's crust ever found.

Murchison region has been chosen as the location for the world's largest radio telescope – the Square Kilometre Array (SKA)

ASTRONOMY

You've never seen the stars shine as brightly as they do in the Gascoyne Murchison. Due to the clear night skies and low radio noise pollution, the Murchison region has been chosen as the location for the world's largest radio telescope – the Square Kilometre Array (SKA). The project will help researchers and astronomers answer fundamental unanswered questions about our Universe.

But what's better about the Gascoyne Murchison region is the low levels of light pollution which make the stars seem like they are leaping out of the sky. The magnificent Milky Way seems to dominate the skies black canvas and weaves its way like a river across the zenith.

Indigenous Astronomy sheds a new light on the Milky Way. The Emu in the Sky has featured in Aboriginal storytelling for thousands of years. If you look up into the sky tonight, you can still spot the Emu in the Sky stretched across the Milky Way. Look closely at the Southern Cross and you'll see its head as a dark smudge tucked near the bottom left hand corner of the constellation. Its neck passes between the two pointer stars, and its dark body stretches the length of our luminous galaxy.

Billion year
old rocks
and stunning
night skies »



In the Gascoyne Murchison you can witness wildflowers carpets as far as the eye can see. It's a staggering sight to behold.

There are more than

12,000

species of wildflowers in Western Australia, making it the world's largest collection of wildflowers.

LOCATIONS



Contact local visitor centres to get exact locations of the best germinations.

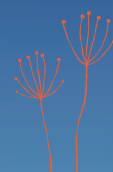
Wildflower trails

HIGHLIGHTS

- Download the 'Wildflowers of WA' and the 'WA Wildflower Tracker' app onto your smart phone before departure.
- Explore fields of everlastings around Paynes Find, Yalgoo, Sandstone and Mount Magnet.
- Take the Rangelands Botanical Walk in Meekatharra and/or Murchison Settlement.
- Look out for Sturt's Desert Pea in creek lines and washes
- Explore Mt Augustus, the world's largest rock, on the 49km circuit Burringurrah Drive littered with flowers.

Find wildflower blooms from

July until
September



- Explore Kennedy Range National Park with over 80 annual wildflower species recorded here. Grevillea and banksia are found on the top of the plateau.
- Unique wreath flowers just north of Pindar and at Mellenbye Station Stay.
- Seek out Verticordia on the tops of breakaway and stony ground.
- Visit Wiluna to see desert wildflowers in their glory: Senna's, Eremophila's, Cotton Bush and purple Mulla Mulla.



Immerse yourself in country

The oldest culture in the world, on the oldest landscape on earth, the Gascoyne Murchison is both ancient and timeless. Here, it is possible to seek out rock artwork earlier than those found in other parts of the world, taking us back to a time past - of Aboriginal peoples who walked this land before written history.



Aboriginal experience



We pay our respects to the Wajarri, Badimia and Inggarda people, the traditional custodians of the region. We acknowledge their continuing connection to the land, waters and culture.

WIRNDA BARNA ARTISTS

Wirnda Barna Art Centre
76 Hepburn Street,
Mount Magnet
www.wirndabarna.com.au

Artwork also available at
Mount Magnet Visitor Centre
22 Hepburn Street,
Mount Magnet

MULLEWA WOMENS INDIGENOUS GROUP

The Mullewa Women's Indigenous Group strive towards creating resilient families and community spirit. 'Our Place, Our Home' drives the project forward.

'Moorheads Buildings'
Jose Street, Mullewa
PH: (08) 9956 6643

TJUKURBA GALLERY/ BIRRILIBURU ARTISTS

The Tjukurba Gallery, home of the Birriliburu Artists, is located in Wiluna at the start of the Canning Stock Route. As a collective, the Birriliburu Artists tell their stories through painting.

The proceeds from the sale of artworks help to sustain community, artists and stories.

Scotia Street, Wiluna
PH: (08) 9981 8000
www.tjukurbagallery.com.au

YAGU ARTISTS GROUP

Yalgoo Arts Centre
Gallery, Studio & Shop
Cnr Gibbons &
Milligan Street, Yalgoo

artscentre@yalgoo.wa.gov.au

Yagu is a Wajarri word meaning mothers. The group of Yalgoo based Yagu artists are proud to share their work and culture in art.

ANDOS ART SUPPLIES AND GALLERY

Lloyds Outback Plaza,
Meekatharra

Ando Binsiar opened an art gallery and studio in the newly refurbished Lloyd's Plaza in 2021.

Where to stay

STATION STAYS

Carnegie Station

342km east of Wiluna

Phone: (08) 9981 2991

Web: www.carnegiestation.com.au

Gabyon Station

Gabyon-Tardie Road,
Shire of Yalgoo

Phone: (08) 9963 7993

Web: www.gabyon.com.au

Melangata Station

Melangata Road,
Shire of Yalgoo

Phone: (08) 9963 7777

Web: www.joclewscooking.com

Nalbarra Station

Burnabinmah-Nalbarra Rd,
Shire of Mount Magnet

Phone: (08) 9963 5829

Web: www.nalbarra.com.au

Nallan Station

Cogla Downs-Taincrow Rd,
Shire of Cue

Phone: (08) 9963 1054

Web: www.nallanstation.com

Become part
of the family"

Narndee Station

Narndee West Road,
Shire of Mt Magnet

Phone: (08) 9963 5414

Web: www.narndee.com.au

Ninghan Station

Great Northern Highway,
Shire of Yalgoo

Phone: (08) 9963 6517

Email: ninghanstation2@bigpond.com

Mellenbye Station

Morawa – Yalgoo Road,
Shire of Yalgoo

Phone: (08) 99723072

Web: www.mellenbye.com.au

Wooleen Station

Twin-Peaks Wooleen Rd,
Shire of Murchison

Phone: (08) 9963 7973

Web: www.wooleen.com.au

FOR STATION STAY DETAILS OR TO BOOK VISIT

www.wastationstays.com.au



YALGOO

Yalgoo Caravan Park

Gibbons Street, Yalgoo

Phone: 08 9962 8472

Email: cpark@yalgoo.wa.gov.au

Yalgoo Hotel

40 Gibbons Street

Phone: (08) 9962 8031

Paynes Find Roadhouse & Caravan Park

Great Northern Highway

Phone: (08) 9963 6111

Web: www.paynes-find-roadhouse.com.au

MURCHISON

Murchison Oasis Roadhouse and Caravan Park

Carnarvon Mullewa Road

Phone: (08) 9961 3875

Email: oasis@murchison.wa.gov.au

UPPER GASCOYNE

Junction Pub and Tourist Park

4 Viveash Way, Gascoyne Junction

Phone: 08 9943 0868

Web: www.junctiontouristpark.com

Mt Augustus Tourist Park

Landor-Mt Augustus Rd, Shire Upper Gascoyne

Phone: (08) 9943 0527

Web: www.mtaugustustouristpark.com

SANDSTONE

National Hotel

17 Payne Street

Phone: (08) 9963 5801

Email: sandstonepub@gmail.com

Outback Accommodation

Thaduna Street

Phone: (08) 9963 5869

Email: outbackaccomm@bigpond.com

Alice Atkinson Caravan Park

Irvine Street

Phone: (08) 9963 5859

Email: stay@sandstone.wa.gov.au

The Breakaway Standstone

Payne Street

Bookings: via AirBnB

MOUNT MAGNET

Mount Magnet Caravan Park

Hepburn Street

Phone: (08) 9963 4198

Email: caravanpark@mtmagnet.wa.gov.au

Commercial Club Hotel

Hepburn Street

Phone: (08) 9963 4021

Email: commercialclubhotel@bigpond.com

Gekkos Mount Magnet

39 Laurie Street

Phone: 0428 979 650

Email: terrace69@bigpond.com

Grand Hotel

Hepburn Street,

Phone: (08) 9963 4110

Email: commercialclubhotel@bigpond.com

Miners Rest Units

Thurkle Cove

Phone: (08) 9963 4380

Outback Gold Accommodation

6 Scott Close

Phone: 08) 9963 4433

Web: www.

outbackgoldaccommodationmountmagnet.com.au

Swagman Roadhouse

Great Northern Highway – Northern End of Town

Phone: (08) 9963 4844

Web: https://swagmanrh.com.au

CUE

Cue Tourist Park

1 Austin St

Phone: (08) 9963 1107

Email: caravanpark@cue.wa.gov.au

Murchison Club Hotel

Austin Street

Phone: (08) 9963 1020

Web: www.murchisonclubhotelcue.com.au

Queen of the Murchison Guesthouse and Café

53 Austin Street

Phone: (08) 9963 1625

Web: www.

queenofthemurchisonguesthouseandcafe.com.au

WILUNA

Gunbarrel Laager

15km east of Wiluna

Phone: (08) 9981 7161

MEEKATHARRA

Auski Inland Motel

Main St Crn of Roberts St

Phone: (08) 9981 1433

Commercial Hotel

77 Main Street

Phone: (08) 9981 1020

Web: www.commercialmeeka.com.au

Karalundi School Caravan Park

Great Northern Highway, 57km North of Meekatharra

Phone: 0450 642 815

Web: www.karalundipark.com.au

Meekatharra Hotel

34 Main Street

Phone: (08) 9981 1134

Royal Mail Hotel

Main Street

Phone: (08) 9981 1148

Web: https://royalmailhotel.com.au

Meekatharra Accommodation Centre (Caravan Park)

64 Main Street

Phone: (08) 9981 1253

Web: www.meekatharraaccommodation.com.au

Paddy's Flat

McCleary Street

Phone: 0407 174 843

Meekatharra Outback Beachhouse

12 Regan Street

Phone: 0407 856 655

Web: https://meekatharra-outback-beach-house.business.site



CHARACTER FILLED TOWN

See wildflowers
July to September

Yalgoo & Paynes Find

YALGOO

Situated along the historic Miners' Pathway Yalgoo offers true outback adventure and unique attractions, including prolific seasonal wildflowers and the Courthouse Museum showcasing over 80 years of Yalgoo history. Be sure to view the Railway Station, historical Yalgoo cemetery, Monsignor Hawes convent chapel and the fascinating Jokers Tunnel.

Seven Murchison shires, including Yalgoo are working collaboratively to create a 'Murchison Geo Region' drawing together the region's incredible array of natural and cultural attractions, its unique flora and fauna, sites of geological and geographical importance, as well as its Aboriginal and European history.

PAYNES FIND

Renowned for its glorious carpets of wildflowers during the season, Paynes Find is also recognised for its Gold Battery. Established in 1911, the Paynes Find Gold Battery is the only working battery in the state. The Paynes Find Roadhouse and Tavern offers travellers a welcome break with fuel, snacks, meals and accommodation available.

Places of Interest

JOKERS TUNNEL

Located 10 kilometres south of Yalgoo, the tunnel was carved through solid rock by early gold prospectors and is a great place to view native flora and fauna.

COURT HOUSE MUSEUM

Once located in the Day Dawn townsite near Cue, the Court House was transported in 1921 to Yalgoo and is now a museum with displays of old over 80 years of Yalgoo history including photographs, gold rush history, memorabilia and artefacts.

MONSIGNOR HAWES DOMINICAN

Chapel of St Hyacinth Designed in 1920 by the famous priest and architect Monsignor Hawes for the Dominican Sisters who were based in Yalgoo.

MINERS' PATHWAY

You can commence your Miners' Pathway adventure from the Gold Battery in Paynes Find, after which you will travel north through Mount Magnet and Cue to Meekatharra, south-east to Sandstone, west to Yalgoo via Mt Magnet and finally south-east again to finish at Paynes Find, viewing Jokers Tunnel and historic Fields Find cemetery on the way.



YALGOO

527KM NORTH OF PERTH

PAYNES FIND

424KM N/EAST OF PERTH

Population 406

Mobile reception and Wifi

Mobile reception available.
Free Wi-Fi.

Visitor Centre

No visitor centre. Information is available at the Caravan Park – Gibbons St.

Public Toilets and Dump Point

Public toilets are available on Gibbons Street 7am to 5.30pm.
Dump point available within the Yalgoo Caravan Park, Gibbons Street.

Supermarket

Lot 70/25 Gibbons Street, Yalgoo.

Nursing Post

20 Gibbons Street, Yalgoo.

Mechanic

No Mechanic available.

24 Hour Fuel

Piesse Street, Yalgoo.

Museum

The Courthouse Museum – Museum Court.

Places to Eat

Yalgoo Hotel Motel 37 Gibbons Street.
Paynes Find Roadhouse and Tavern,
Great Northern Highway, Paynes Find.



Prospecting in Yalgoo

Jokers Tunnel

Paynes Find GOLD BATTERY

Visit the only working Gold Battery remaining in Western Australia. The Battery guides you to the town's Museum filled with relics of the mining, pastoral and sandalwood industries.

MUST SEE

Further info (08) 9963 6513



YALGOO AND PAYNES FIND



Yalgoo Arts and Cultural Centre



CHARACTER FILLED TOWN

See wildflowers
July to September

Murchison Settlement

Places of Interest

MURCHISON SETTLEMENT

Be at one with nature on the upgraded rangeland botanical walk or view the many artefacts of pastoral and indigenous life at the Murchison Museum. Go bird watching, enjoy the sunsets, gaze at the amazing night sky or just boost the population for a day.

MURCHISON OASIS ROADHOUSE & CARAVAN PARK

Located at the Murchison Settlement the roadhouse, which incorporates motel style accommodation and a first class caravan park, providing visitor needs with tourist information, shady trees, grass and modern facilities. Shop, great food and 24 hour Eftpos fuel available.

ERRABIDDY BLUFF AND OUTCAMP

Located 15 kilometres west of the Settlement, Erabiddy Bluff's large rock formations make a significant mark on the landscape. Ideal for a day trip and a picnic or BBQ. The magnificent sunsets seen from the bluff are a prelude to a display of stars you never thought existed.

OLD STOCK WELL

55 kilometres south of Murchison Settlement on the Carnarvon-Mullewa Road, this recently restored well was once used by drovers moving stock. A picnic area with barbeque is now available for visitors making it a great place to stop off and take in the vast history of the area.

BALLINYOO BRIDGE

Further south, the oldest concrete bridge in Western Australia has been replaced with a new bridge, but a span of the original Ballinyoo Bridge has been preserved as an historic marker of its former glory.

WILDLIFE AND WILDFLOWERS

Kangaroos, emus, majestic eagles, red-tail black cockatoos and many amazing reptile species. Seasonal rain can bring fields of everlasting and other rangeland natives.

STATION STAYS

Experience true station life, discover indigenous rock art or soak in the outback atmosphere at the various station stays throughout the region.



669KM NORTH OF PERTH

Population 153

Mobile reception and Wifi

No mobile reception available.

Free Wi-Fi available at the Murchison Oasis Roadhouse.

Visitor Centre

No visitor centre. Brochures available in the Murchison Oasis Roadhouse.

Public Toilets and Dump Point

Public toilets are available outside the Murchison Oasis Roadhouse.

Dump point available outside the Murchison Oasis Roadhouse.

Supermarket

No supermarket available. Basic supplies at the Murchison Oasis Roadhouse.

Nursing Post

No nursing post available.

Mechanic

No Mechanic available.

24 Hour Fuel

Murchison Oasis Roadhouse.

Museum

Office Road – Behind Shire Offices.

Bowling Green and Tennis Court

Main Street – Between Roadhouse and Shire Office.

Places to Eat

Murchison Oasis Roadhouse.



Errabiddy Bluff



Bilung Pool

MUST SEE

Bilung Pool & **WOORAMEL RIVER GORGES**

On the Carnarvon-Mullewa Road, discover the tranquil waters and enjoy a picnic at Bilung Pool. While you're there be sure to take in the Wooramel River Gorges, a spectacular example of an inland river system.

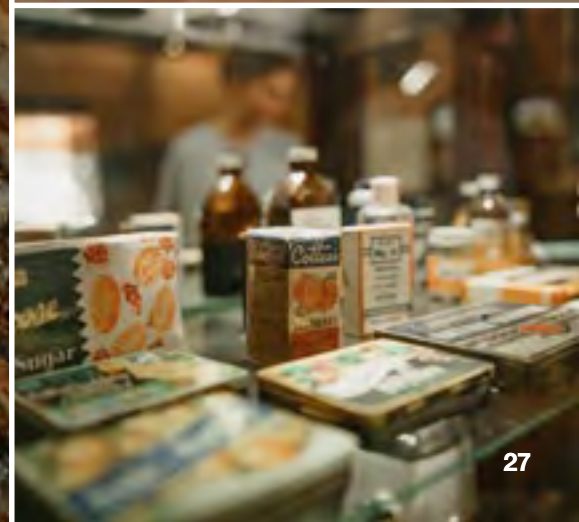
MURCHISON SETTLEMENT



Where the outback begins ...

It doesn't get any more outback than Murchison. Home to sprawling pastoral stations, abundant wildlife, and seasonal wildflower displays, yet very few people. The Shire covers an area of 49,500 square kilometres with a population of just 153.

Murchison Shire is also the home of the Australian Square Kilometre Array Pathfinder (ASKAP) and Murchison Radio-astronomy Observatory site (MRO). The purpose of the ASKAP/MRO is to provide a world-leading survey radio telescope to explore the history of the universe. The MRO is operated by CSIRO as a restricted site and is not open to visitors.



CHARACTER FILLED TOWN

Dark sky
Star gazing

Mount Magnet

Places of Interest

MINING AND PASTORAL MUSEUM

Entered through the Visitor Centre, the Mount Magnet Historical Society's Mining and Pastoral Museum, considered one of the best regional museums in Australia, gives unique insight into a rapidly vanishing way of life. Heroes and hardship, images, artefacts and stories to inspire Extraordinary exhibits, including No1 Rabbit Proof Fence and new exhibit, Hill 50 Gold Mine Winder.

WIRNDA BARNA ARTS CENTRE

Visit the Gallery where you can see artists at work. If closed, artworks by can be purchased from the Visitor Centre.

TOURIST DRIVE TRAIL

Popular 37km drive or cycle through famous gold mining areas, scenic lookout, ghost town and spectacular outback scenery, includes: The Granites (Geo trail site - No camping) Just 9km north of Mount Magnet, The Granites offer driving, cycling and walking trails and picnic sites. This magnificent area of granite breakaways holds great significance to the Badimaya people and is expected to be treated with due respect.

WARRAMBOO HILL LOOKOUT

See spectacular views across open cut mines and township to far horizons. A great place to enjoy sunrise or sunset minutes from town. Amphitheatre (Geo trail site - No camping) Extraordinary ancient waterfall rock formations to explore. Perfect surrounds for astro landscape photography.

TOURIST DRIVE TRAIL

Popular 37km drive or cycle through famous gold mining areas, scenic lookout, ghost town and spectacular outback scenery, includes:

THE GRANITES (GEO TRAIL SITE – NO CAMPING)

Just 9km north of Mount Magnet, The Granites offer driving, cycling and walking trails and picnic sites. This magnificent area of granite breakaways holds great significance to the Badimaya people and is expected to be treated with due respect.

WARRAMBOO HILL LOOKOUT

See spectacular views across open cut mines and township to far horizons. A great place to enjoy sunrise or sunset minutes from town.

AMPHITHEATRE (GEO TRAIL SITE – NO CAMPING)

Extraordinary ancient waterfall rock formations to explore. Perfect surrounds for astro landscape photography.

HISTORIC OUTDOOR CINEMA

One of only three still operating in Western Australia. Occasional and seasonal.



560KM NORTH OF PERTH

Population 700

Mobile reception and Wifi

Mobile reception available with Telstra.
Free Wi-Fi available – Hotspot number 557434828725.

Visitor Centre

22 Hepburn Street.

Public Toilets and Dump Point

Public toilets are available at Federal Park in Hepburn Street and The Visitor Centre.
Dump point available at the Mount Magnet Caravan Park – 100 Hepburn St.

Supermarket

IGA Xpress – 36 Hepburn Street.

Butcher

Mt Magnet Meats – 76 Hepburn Street.

Nursing Post

Nursing post on Welcome Street.
Geraldton Regional Aboriginal Medical Service – 56 Attwood Street.

Mechanic

Seivy's Mechanical Services
61 Richardson Street.

24 Hour Fuel

Ampol Swagman Roadhouse
599 Hepburn Street.

Museum

22 Hepburn Street.

Places to Eat

Commercial Club Hotel – 63 Hepburn Street.
Mount Magnet Grand Hotel – 65 Hepburn Street.
Swagman Roadhouse – 599 Hepburn Street.
Murchison Hardware – 67 Hepburn Street.



The Granites



The Granites

MUST SEE

Astro Rocks Fest

Celebrating life through our own unique cultures and heritage, dark night sky and ancient rocks beneath our feet.

www.mtmagnet-astrorocks.com

MOUNT MAGNET



Gateway to one of the world's ...

natural geoparks with accessible awe-inspiring rocks, geology of the Murchison Geo Region and overarching dark skies, perfect for astro landscape and deep space astrophotography. Mount Magnet, Geo Hub of the Murchison and on 'one of the finest Goldfields in the world' is more than just about gold! Be drawn to Mount Magnet and the ancient rocks of the Murchison and adjoining Gascoyne region, where oldest, rarest and largest rock formations have been created over eons of time.

Mount Magnet is named after local magnetic rock and is situated at the centre of the Gascoyne-Murchison Miners' Pathway. Here, rich heritage of Aboriginal presence is also revealed and celebrated, including local Badimaya language.



Sandstone

Places of Interest

SANDSTONE HERITAGE TRAIL

This 18km self-drive trail features locations of historical and natural significance. Don't miss the breakaway that housed the Old Brewery. Photograph London Bridge, the natural basalt formation which is over 350 million years old. The Trail also includes the former State Battery and Contradiction Well.

NATIONAL HOTEL

The National Hotel is the last and smallest of four hotels built during the gold rush years, and the only one still standing. It's a great place to meet some of the locals.

BLACK RANGE TEAROOMS

Situated on the western end of Oroya Street the tearooms are a great place to grab a coffee and a bite to eat. Open from April to September.

BREAKAWAY COUNTRY

Just over 30km east of Sandstone, on the way to Leinster, is the Peter Denny Lookout featuring stunning views, fire rings and picnic tables.

SANDSTONE NIGHT SKY

Witness some truly spectacular sunsets. Sandstone is an amazing place to experience the glory of the night sky. The darkness of the outback sky and clear atmosphere make it a brilliant location to stargaze. The Shire has installed a telescope system and stargazers can book a viewing on (08) 9963 5061 or (08) 9963 5802, during office hours.

WILDFLOWERS

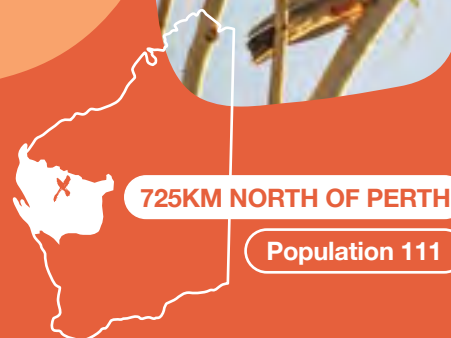
Subject to seasonal rain, Sandstone is transformed from red earth to a carpet of colour from late July to mid-September. Be sure to contact the Visitor Information Centre to check on availability of wildflowers and best viewing locations.

GOLF COURSE

Visitors can play a round on the town's unique 18-hole golf course. Clubs available for hire from the Sandstone Visitor Centre.

BOWLING GREEN

Visitors are welcome to use our new bowling green (BYO bowls) or join the locals for a game. Call in at the Shire Administration office for dates and times.



725KM NORTH OF PERTH

Population 111

Mobile reception and Wifi

Mobile reception available with Telstra.
No Wi-Fi available.

Visitor Centre

18 Hack Street.

Public Toilets and Dump Point

Public toilets are available at The Visitor Centre, 18 Hack Street.

Dump point available at the Alice Atkinson Caravan Park, Irvine Street.

Supermarket

No supermarket available.

Nursing Post

Nursing post on Irvine Street
(Thursdays only).

Mechanic

No Mechanic available.

24 Hour Fuel

Corner of Oroya and Payne Streets.

Museum

18 Hack Street.

Bowling Green and Golf Course

Rowe Street.

Places to Eat

Sandstone Pub, Cnr Payne Street
& Oroya Street.

Black Range Tea Rooms, Oroya Street.



PHOTO: Jenny Newby



MUST SEE

Heritage Town Walk

The Post and Telegraph Office was built in 1909. Some sites you will see on the town walk include the old and new Shire Office buildings, the Black Range Chapel, Heritage Cottage, Gold and Wool Interpretive Park and former School (the original Courthouse). The Police Lock-up and the Water Park are favourites on this easy stroll about town.

London Bridge



SANDSTONE

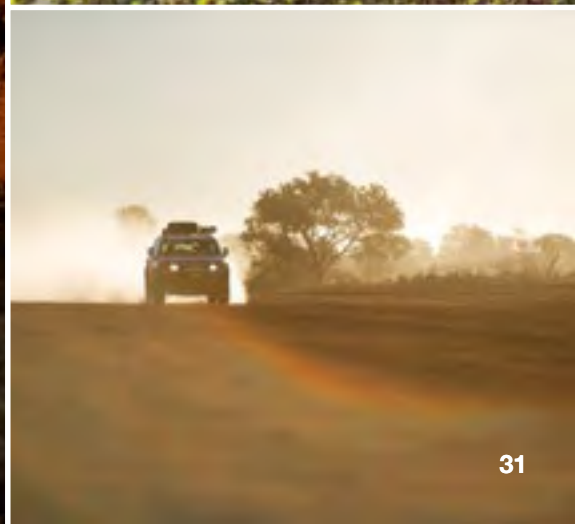
PHOTO: Jenny Newby

Lying in the heart of the ...

spectacular lower Murchison district, Sandstone's bronzed landscape contains many unique and picturesque locations. Throughout the area, natural rock formations or breakaways contrast dramatically with the rust stained landscape.

Gold was first discovered in the immediate Sandstone area as early as 1894 and remains a popular spot for the casual gold prospector.

From 1906 Sandstone grew to a small city of some 6000-7,000 people. By the end of the 1920s only 200 people remained. Fortunately Sandstone has survived and today makes an ideal stopover at the centre of some of Western Australia's great tourist routes.



CHARACTER FILLED TOWN

Dark sky

Star gazing

Cue

Places of Interest

ABORIGINAL ART WALGA ROCK

A huge granite monolith known as Walga Rock, situated 48km west of Cue, is a site of deep Aboriginal cultural and spiritual significance. The most unusual art depicts a sailing ship in white ochre with masts, rigging and portholes.

THE CUE HISTORICAL PHOTOGRAPH COLLECTION

Step back in time to the wild gold rush days of Cue's past with a journey among the collection of historical photos on display in the Cue Shire Administration Building, built in 1895 and was once home to the London and Western Australian Investment Company offices, and later the Gentlemen's Club.

NALLAN LAKE

Nallan Lake is a nature reserve and during periods of heavy winter rains transforms into a favoured picnic spot.

MILLY SOAK

Milly Soak is located 16 kilometres north of Cue and was a popular picnic spot in Cue's early history. It was also the town's first water supply.

GOVERNMENT BUILDINGS

The government buildings situated in the main street were built between 1895 and 1897 from locally quarried limestone. The buildings were, and remain, among the most impressive in the region and it is still being used as a Police Station. It is now home .

OLD GAOL

Located in the Cue Tourist Park was built in 1896 and was a temporary home to prisoners being transported from outback lock ups in the north until its official closure in 1914.

OLD CEMETERY

About 4km east along the Sandstone Road, view a cluster of graves from the late 1890s. It is thought that 9 graves were moved here from their original burial sites in 1897, to make way for the railway station.

THE OLD MUNICIPAL CHAMBERS

This building in Robinson Street was opened in 1896, and the Shire conducted its first meeting here, used until 1980.

MASONIC LODGE

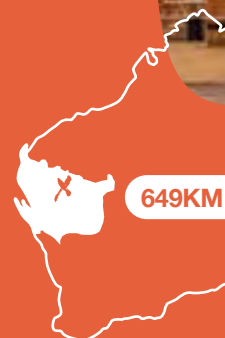
Built in 1899 from timber and galvanised iron, and is said to be the biggest free standing, double story corrugated iron construction in the southern hemisphere, is subject to many a ghost story!

GREAT FINGALL MINE

The Great Fingall Mine Site Office is another turn of the century structure that is a truly magnificent example of the buildings of this period. Interestingly Herbert Hoover, President of the USA, worked in this building.

BIG BELL

The ghost town of Big Bell, situated approximately 30km north-west of town was gazetted in 1936 and soon after became the terminus of a spur line from the main railway in Cue. The town was deserted by the mid-1950s. The hotel reputedly had the longest bar in Australia and the remains of this once impressive structure are still standing.



649KM NORTH OF PERTH

Population 375

Mobile reception and Wifi

Mobile reception available with Telstra.
Free Wi-Fi available.

Visitor Centre

Cue Community & Visitor Centre
72 Austin Street.

Public Toilets and Dump Point

Public toilets are available Crn Austin and Victoria Streets.

Dump point available Crn Robinson and Dowley Street.

Supermarket

Bell & Co (Liquor & Grocery)
49 Austin Street.

Cue Roadhouse and General Store
12 Austin Street.

Nursing Post

A doctor visits fortnightly.

Mechanic

No Mechanic available.

24 Hour Fuel

Cue Roadhouse and General Store
12 Austin Street.

Museum

Historical Photograph Collection
Shire Office, 73 Austin Street.

Cue Heritage Discovery Centre
Cue CRC, 72 Austin Street.

Places to Eat

Murchison Club Hotel – 66 Austin Street
Queen of the Murchison – 53 Austin Street

Cue Roadhouse and General Store
– 12 Austin Street



Big Bell

Masonic Lodge



MUST SEE

Hospital Ruins

The hospital served the old Day Dawn township and started as a canvas and bough shed in July 1892. In 1895 a more sturdy structure was built from local stone. Today several walls from this building remain, as does the ruins of the chimney from the hospital's crematorium.



Nallan Station Stay

CUE

Known as Queen of the Murchison ...

because of its importance in the gold production of the area, it once boasted a population of around 10,000.

Cue makes a fascinating starting point to explore the Murchison and Goldfields regions of Western Australia.

As legend has it, Cue came about thanks to a gold find by prospector Mick Fitzgerald who, having spotted an Aboriginal fellow called 'Governor' with a 10 ounce nugget around his neck, enquired where he had found the nugget, and he was then led to a quartz hill bearing gold in Cue's centre on New Year's Day in 1892. The quartz blow is still visible today, located behind the Fire Station.



Great Fingall Mine



Walga Rock

Meekatharra

Places of Interest

OLD SOAK

The Wadjarri-Yamatji name for Meekatharra is “mikadah”, meaning “hollow” or “depression”. At the north end of town you can still find the old soak. Aboriginal people camped here and during the gold rush it became a regular stopping point for Afghan camel trains. A leisurely stroll along the well-marked interpretive Rangelands Discovery Trail along the Meekatharra Creek will lead you to the soak and other points of interest.

PEACE GORGE

Free camping (must be fully self-sufficient) is permitted at Peace Gorge, just 3km from town. It got its current name after a picnic was held there for service people returning from WWI, but is a registered aboriginal heritage site with many cultural uses. This beautiful area of shared country is also a popular place for weddings, town celebrations and family get-togethers.

HISTORIC OUTBACK PUBS

The best place to hear some tall tales and “have a yarn” with the locals is at our historic pubs – keep a grain of salt handy! Our locals are a goldmine of personal stories that reveal more about the past than any history book.

PROSPECTING AROUND MEEKATHARRA

Prospecting is a popular pastime, and many locals have their own leases. Venture out bush and discover traces of the past, including Garden Gully, where you can still see the remains of kerosene tin humpies. To prospect, you will need to obtain a Miners Right permit and map from the Department of Mines, Industry Regulation and Safety (located in Savage Street) and bring your own detector.

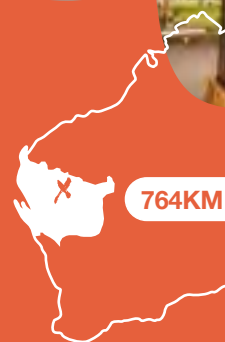
Meekatharra is gaining a global presence with the world-class Australian Vanadium Project just 40km away at the historic Gabanintha mine area.

Events

Meekatharra holds diverse family-oriented events throughout each year including the popular Meekatharra Outback Festival, Races and the Buttah Windee Barramundi Festival, usually held in late September and complementing the regional festival and event circuit.

We have a dirt kart club plus rifle club, gymkhana, recycling group and other social groups, plus there's usually a trivia quiz, open microphone night, pool or darts at the pubs, where everyone is welcome to join in.

Although we live at “the end of the earth”, you will find us a diverse mob who come from many parts of the globe and all walks of life - stop and stay and discover why we love Meekatharra. You can find road condition updates, event dates and other information at www.meekashire.wa.gov.au



764KM NORTH OF PERTH

Population 812

Mobile reception and Wifi

Mobile reception available with Telstra.
Free Wi-Fi available at Lloyds Plaza.

Visitor Centre

Meekatharra CRC 55 Main Street.

Public Toilets and Dump Point

Public toilets are available at 64 Main Street.

Dump point available in the laneway behind the Welcome Park off Main Street.

Supermarket

22 Main Street.

Hospital

Savage St.

Mechanic

RMH Mechanical – 0459 679 280.
Trenfield Motors – 0418 941 006.
Hoddz Mechanical.

24 Hour Fuel

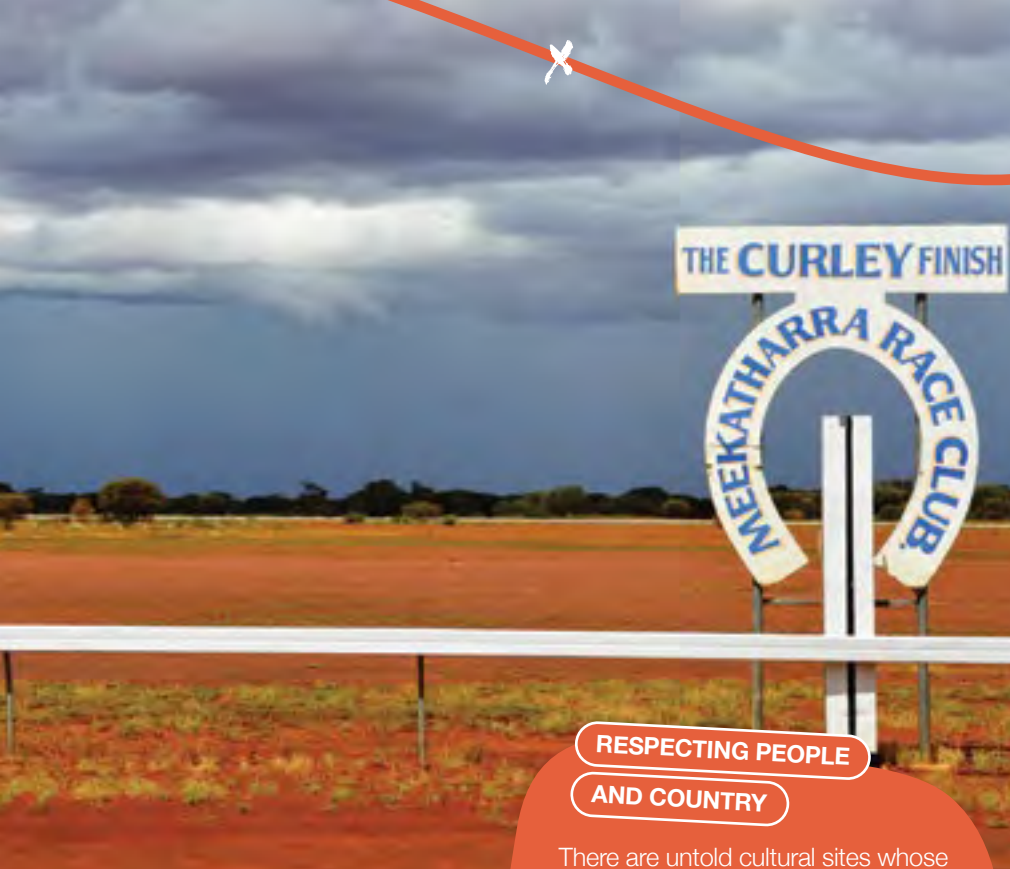
BP – Main & Connaughton Streets.
Caltex – Diesel – Railway Street.
Shell Coles Express – 821 Main St.

Museum

Within Meekatharra Shire Office on Main Street.

Places to Eat

Energise Café, Food Van – 1 Savage St
Leightons Café – 64 Main St
Meekatharra Accommodation Centre – 119 Main Street
Commercial Hotel Meekatharra
Royal Mail Hotel
Meekatharra Hotel



Mt Gould Lock-up

RESPECTING PEOPLE AND COUNTRY

There are untold cultural sites whose locations are passed on from the Elders of the Traditional Owners who know how to read the ancient signposts. If you want to learn more about the indigenous history and culture of the area, just ask - there is usually an Elder or other approved person who will be happy to explain aspects of their country and culture.



MEEKATHARRA

There's just something about Meeka ...

"There's just something about Meeka", as the locals say - this historic outback goldfields town has lots to offer, and we're famous for people "forgetting" to go home! A busy regional hub located 764km north of Perth, Meekatharra is a friendly place to refresh and refuel on your Golden Outback adventure.

Pastoral and prospecting settlement in the area began in the late 1800's, changing the rangelands landscape and the rich aboriginal culture of the area. The town was gazetted in 1903, named Meekatharra after the first mine registered there by prospectors Meehan, Porter and Stoich in 1894.

If you're into camping, 4x4 and dirt bike adventure, there are plenty of great tracks, scenic spots and places to camp under the stars - there's a lifetime of amazing places and experiences to discover. Further afield, there are excellent day trips you can take - Peak Hill ghost town, Bilyuin Pools, Nannine, Cue and Mount Magnet, and more.



Gascoyne Junction

Places of Interest

A MIGHTY RIVER

The Gascoyne River flows for 760 kilometres from the Western Desert to the Indian Ocean at Carnarvon. The Mighty Gascoyne is known as the 'upsidedown river' because most of its water is beneath the surface. Along its path the river surfaces, keeping people and animals alive during the scorching summer heat. The river also provides a wonderful habitat for the many species of birds that flock here all year round.

ROADS LESS-TRAVELLED

With around 1,800 kilometres of unsealed road, there is plenty of opportunity to explore the country. Amongst the wildlife you'll encounter are cattle, goats, sheep, horses, kangaroos, emus, wild turkeys, bungarras, dingoes, a vast variety of birds, and the occasional vehicle as well. The roads are generally in very good condition, but it's always wise to bring a couple of spare tyres, and plenty of water.

GEOLOGY

200-300 million years ago most of the area was underwater, and sea-life fossils are common around the area. A fault zone 10 kilometres wide is just north of the Errabiddy homestead. What takes the eye most is the types and colours of precious and semi-precious stones which are so attractive.

YARNING SPOT, CATTLE POOL

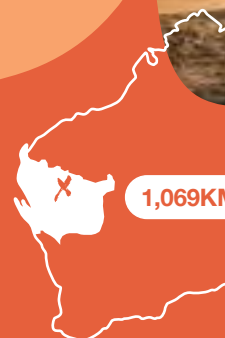
Yarning Spot is to the north of the Gascoyne River at the Junction, and Cattle Pool is on the Lyons River near Cobra. The prolific and ever-changing bird life congregate here. Ornithologists have counted over 128 species of bird-life in the Gascoyne and the sights and sounds of these birds are truly wonderful.

KENNEDY RANGE NATIONAL PARK

This is a truly awesome place to visit with many places to walk to and explore such as Honeycomb Gorge. During July to September you may be lucky enough to witness the colonies of the unique Dawson's Burrowing Bees.

MT AUGUSTUS NATIONAL PARK

Mt Augustus is the largest monoclinal in the world, bigger than Uluru. However, the vegetation on the Mount is deceptive. Colours and hues change throughout the day, and make this a spectacular sight. A walk to the top is achievable and very rewarding.



1,069KM NORTH OF PERTH

Population 300

Mobile reception and Wifi

Telstra at Gascoyne Junction 3G.

Optus at Mt Augustus 4G.

Free Wi-Fi at Gascoyne Junction CRC

Visitor Centre

The CRC on Scott Street, adjacent to the Museum and Council Office.

Public Toilets and Dump Point

Public toilets are available at the CRC Cnr Scott Street and Smith Street.

Public toilets opening in 2022 at the Two Rivers Memorial Park Smith Street.

Dump point available at Junction Pub & Tourist Park and Mount Augustus Tourist Park.

Supermarket

Substantial supplies at the Junction Pub and Tourist Park, 4 Viveash Way and Mt Augustus Tourist Park.

Nursing Post

No - RFDS Box available at Gascoyne Junction Community Resource Centre.

Mechanic

No Mechanic available.

24 Hour Fuel

Ampol at the Junction Pub and Tourist Park, 4 Viveash Way.

Diesel and Unleaded at Mt Augustus Tourist Park (During Office Hours Only).

Museum

Housed in the original Roads Board Building - 4 Scott Street.

Places to Eat

Junction Pub, 4 Viveash Way.

Mt View Cook House, Mount Augustus Tourist Park.





Kennedy Range National Park



Mt Augustus National Park

RESPECTING PEOPLE

AND COUNTRY

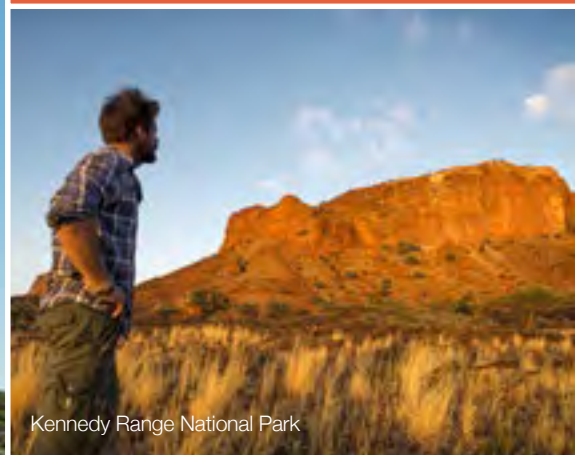
Visitors are advised to leave all rocks, stones, water holes, hills and ranges, exactly as you found them. You should be mindful that there are places here that are powerful and sacred to the original occupiers, and may not be visible to the casual observer.

GASCOYNE JUNCTION



Nature, humanity and time meet...

at the intersection that is the Gascoyne Junction - it's where the ancient Lyons and Gascoyne River join up, and where the stock routes of the past overlapped. As well, it is a place where the land still gives a clear view of life on earth millions of years ago. The abundant fossil beds, and unmistakable evidence of vast oceans of the distant past paint a fascinating picture.



Kennedy Range National Park



Wiluna

Places of Interest

HISTORICAL BUILDINGS

The former Wiluna District Hospital was built in 1933 and is listed on the State Heritage Register. It was here that notable Wiluna identities such as the retired Governor General Sir Michael Jeffrey was born. The Wiluna Shire Offices were situated here until 2016 when extensive restoration of the buildings began. This beautiful complex of five historical buildings situated around a central courtyard has been developed into a Heritage and Interpretive Centre featuring displays on town's, mining, pastoral histories, Indigenous culture and the Canning Stock Route and Gunbarrel Highway.

PIONEER CEMETERY

19 grave sites identified from Shire records dating from 1893 to 1903 when the cemetery was moved because of periodic flooding in the area first chosen.

STATUES OF WARRI AND YATUNGKA

Be sure to visit the town's statue 'Last of the Nomads' and read the plaque to learn of the beautiful love story behind their culturally frowned-upon relationship. Their deaths marked the end of a tribal lifestyle that has stretched back more than 40,000 years. Not to be missed!

CLAY PANS

These fill with water at different times of year and are great for windsurfing, canoeing, bird watching and picnics.

TJUKURBA ART GALLERY AND TOURIST INFORMATION

The Tjukurba Art Gallery offers visitors a sample of unique and affordable paintings by the Birrilburu artists, some of whose works have been exhibited overseas. The Gallery is located in the Eastern building of the historic former Wiluna District Hospital (now Heritage and Interpretive Centre).

CANNING STOCK ROUTE (CSR)

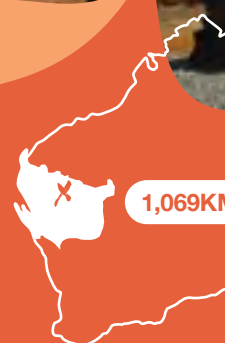
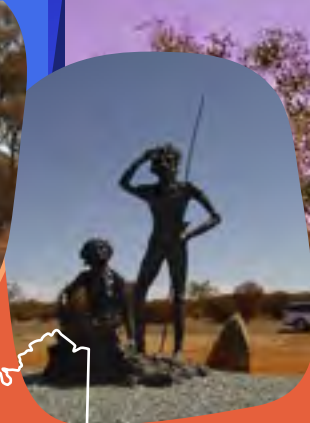
Well numbers 1 and 2 are close to the town, as are the original cattle loading yards. The turn off for Well number 1 is located 3.8km north of town on Neds Creek Road and then 3.5km to the west. Well No. 2 is located approximately 39km to the north, also along Neds Creek Road and then to the east along the CSR track. Exploring to various parts (or all) of the track between Wiluna and Halls Creek is popular in cooler months of the year.

LAKE VIOLET

Located near the township of Wiluna, this lake can host hundreds of black swans over the winter months.

NORTH POOL

North Pool is located on the Canning Stock Route. Both North Pool and Lake Violet are pleasant spots for a picnic and are fantastic for bird watching. Like many other features these are within 20 kilometres of town.



1,069KM NORTH OF PERTH

Population 300

Mobile reception and Wifi

Mobile reception available with Telstra
No Wi-Fi available

Visitor Centre

No visitor centre.

Public Toilets and Dump Point

Public toilets are available at
34 Wotton Street

No Dump point available

Supermarket

Wiluna Traders Store
37 Wotton Street

Nursing Post

44 Scotia Street

Mechanic

Jims Mechanical Services Wiluna
174/ 176 Woodley Street

24 Hour Fuel

Wiluna Traders Store – 37 Wotton Street

Art Gallery

Tjukurba Art Gallery and Discovery
Centre – 28 Scotia Street

Places to Eat

Gunbarrel Laager Travellers' Rest –
14kms from town



Ganjili flower
(Courtesy of Sara Walker, Shire of Wiluna)



MUST SEE

Gunbarrel Highway

The Gunbarrel is a popular four wheel drive which takes you across the ranges and central desert to Warburton and Alice Springs.

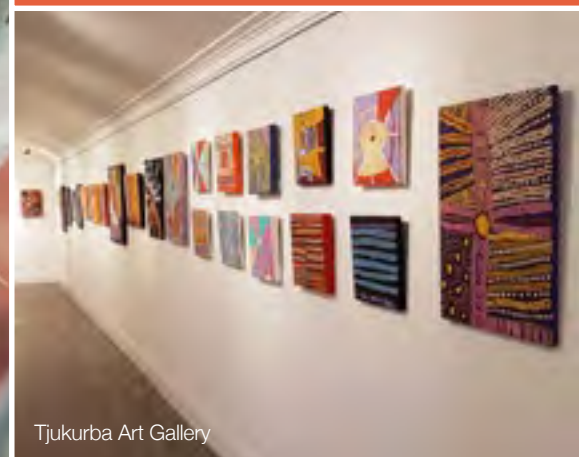
WILUNA



North Pool

The edge of the Little Sandy Desert ...

The Shire of Wiluna covers an area of 184,000 square kilometres and is predominately mining, pastoral and native title land, including Indigenous Protected Areas at Matuwa (Lorna Glen Station), Kurrara-kurrara and Birriliburu. The town of Wiluna is on the edge of the Little Sandy Desert, located east of Meekatharra (unsealed) and north of Leinster (sealed), on the Goldfields Highway. It's the gateway to the Canning Stock Route which runs north to Halls Creek, and the Gunbarrel Highway that runs east to Alice Springs.



Tjukurba Art Gallery

