

AUSTRALIA'S
Golden Outback

2024 TRADE & MEDIA KIT



WELCOME TO AUSTRALIA'S Golden Outback

Covering 54 per cent of Western Australia, Australia's Golden Outback region stretches from the rugged red earth of Mt Augustus and Kennedy Ranges in the north to the sweeping snow-white beaches of Esperance and the South Coast.

At the very heart of Western Australia's Golden Outback lies the modern mining hub of Kalgoorlie and the Goldfields, offering fascinating insights into the history and heritage of the wild gold rush days. And in the Wheatbelt to the west,

picturesque rolling farmland is dotted with colourful rural townships, granite outcrops, farm stays and Wave Rock.

Australia's Golden Outback region provides diverse outback tourism opportunities, epic road trips, fascinating nature, wildlife and cultural experiences.

The natural landscape is a dazzling display of outback plains, huge deserts and salt lakes, rugged rocky outcrops, wild woodland and some of the whitest beaches in the world. Spring time transforms the region into a rainbow of blooming Western Australian wildflowers.

CONTACT US

AUSTRALIA'S GOLDEN OUTBACK

Marcus Falconer, CEO

✉ ceo@goldenoutback.com

☎ +61 428 109 001

australiasgoldenoutback.com



♀ MT AUGUSTUS

CONTENTS

Map & Roadtrips breakdown	4	Hoover House	41
Road Trips	6	Leonora Motor Inn	42
Top 13 Experiences	8	Rydges Kalgoorlie Resort and Spa	43
ESPERANCE		The Plaza Hotel	44
Destination Information	11	Goldfields Air Services	45
Road Trips	12	Kalgoorlie Tours and Charters	46
Trade Ready Product:			
Comfort Inn Bay of Isles	15		
Esperance Chalet Village	16		
Cindy Poole Glass Gallery Tours	17		
Esperance Farm Experience	18		
Esperance Island View Apartments	19		
Heyscape	20		
Hospitality Esperance SureStay Collection by Best Western	21		
Esperance Island Cruises	22		
Fly Esperance / Tour Esperance	23		
HeliSpirit	24		
Untamed Esperance	25		
WHEATBELT			
Destination Information	27		
Road Trips	28		
Trade Ready Product:			
Mary's Farm Cottages & Cambinata Yabbies	31		
Wave Rock Hotel/Motel	32		
Wave Rock Resort	33		
GOLDFIELDS			
Destination Information	35		
Road Trips	36		
Trade Ready Product:			
Discovery Parks – Boulder	39		
Hospitality Kalgoorlie SureStay Collection by Best Western	40		
GASCOYNE MURCHISON			
Destination Information	49		
Road Trips	50		
Trade Ready Product:			
Wooleen Station	53		
New Leaf Connect	54		
Region Wide Product:			
Great Southern Outback Tours and Accommodation	57		
Karijini Eco Retreat	58		
Redsands Campers	59		
4xploring	60		
Australian Pinnacle Tours	61		
InStyle Adventures	62		
Luxury Outback Tours	63		
WILDFLOWERS			
The Road to Wildflowers	64		
Contact Details	66		

Road Trips

GASCOYNE MURCHISON

- Road to the Rock
- Kingsford Smith Mail Run
- Wool Wagon Pathway
- Miners Pathway

THE WHEATBELT

- Public Silo Trail
- Eastern Wheatbelt Self-Drive Trail
- Granite & Woodlands Discovery Trail
- Wheatbelt Way
- Wildflower Way
- Pathways to Wave Rock
- The Holland Way & The John Holland Track
- Wineries, Woodlands & Wheatbelt Trail
- Northern Wheatbelt Wonders
- Pioneers' Pathway
- Farm to Fork Trail

KALGOORLIE & THE GOLDFIELDS

- Canning Stock Route
- Golden Quest Discovery Trail
- The Outback Way
- Anne Beadell
- Leonora Loop Trails
- Gunbarrel Highway
- Norseman Heritage Trail
- Ocean to Outback Loop

ESPERANCE & THE FITZGERALD COAST

- Road to Esperance
- Ravensthorpe Ranges
- Great Ocean Drive
- The Nullarbor

MONTHLY AVERAGE TEMPERATURES

Gascoyne Murchison

Monthly Av Temp (°C)	
Dec-Feb	37°
Mar-May	29°
Jun-Aug	20°
Sep-Nov	29°

The Wheatbelt

Monthly Av Temp (°C)	
Dec-Feb	33°
Mar-May	25°
Jun-Aug	17°
Sep-Nov	24°

Kalgoorlie & the Goldfields

Monthly Av Temp (°C)	
Dec-Feb	32°
Mar-May	25°
Jun-Aug	18°
Sep-Nov	25°

Esperance & the Fitzgerald Coast

Monthly Av Temp (°C)	
Dec-Feb	25°
Mar-May	23°
Jun-Aug	17°
Sep-Nov	21°

— Sealed Road	✈ Airport
— Unsealed Road	⛽ EV charging station
— 4WD Only	⛽ Fuel
— Distance (km)	⛽ Fuel 24/7
— National Park/ Nature Reserve	ℹ Visitor Information
	ℹ Accredited Visitor Centre



Get inspired at
australiasgoldenoutback.com



Road Trip Country

Well known as having the most road trips in the state, Australia's Golden Outback is a natural choice for an adventurous driving holiday. Whether it's for a few days, an adventurous 4WD trip or a longer-term exploration, there's a place and a drive to suit all.

Most of our road trips start in Perth and explore the amazingly varied and rugged Golden Outback. From the ancient gorges of the Gascoyne Murchison to the wildflowers and countryside of the Wheatbelt, to the historic Goldfields and the gorgeous coastal locations like the Fitzgerald River National Park and Esperance.

From 2-day trails that you can enjoy on a weekend, to epic 14-day itineraries that will take you through some of the most breathtaking natural attractions Australia has to offer, there's no wonder we're known well as Road Trip Country.

For more information visit:
australiasgoldenoutback.com/road-trips

ROAD TO ESPERANCE

Esperance is an absolute haven of natural wonders. You'll find an abundance of white-sand beaches, rugged national parks and the clearest ocean water. Esperance is just over 700km from Perth and the drive there is one EPIC road trip!

- 7 days
- Sealed roads



GREAT OCEAN DRIVE

- 1-2 hours
- Sealed roads



Some call it the best stretch of coastline in Australia. Renowned for having some of the finest beaches in Australia and the clearest, crystalline waters; Esperance packs a coastal punch that's hard to beat. This drive takes just an hour or two to complete and showcases some of the best beaches in Australia.

FARM TO FORK TRAIL

Take a culinary adventure through the Southern Wheatbelt to Esperance. Meet with farmers and producers making waves in Western Australia's food and dining scene in a paddock to plate road trip.

- 6 days
- Sealed roads



WILDFLOWER WAY

- 3 days
- Sealed roads

WA is home to thousands of species of wildflowers, some found nowhere else on earth. Spring is the perfect time to explore the blooms, so mark your calendar and set off on a beautiful, colourful drive through the stunning Northern Wheatbelt, finishing in the coastal town of Geraldton. For your return to Perth, follow the new Midlands Route. Both trails are signposted and feature interpretive panels.



SILo ART TRAIL

- 5 days
- Sealed roads

Explore this colourful route through the Wheatbelt and Great Southern following the PUBLIC Silo Trail, which has been transformed by a string of massive grain silos into works of art. What better way to get off the beaten track and explore the Wheatbelt than following these larger than life murals?



PATHWAYS TO WAVE ROCK

- 3 days
- Sealed roads

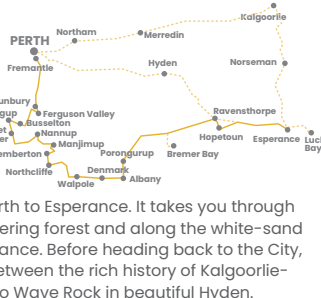
Ready to surf an inland wave? Then it's time to hit the road and head to Wave Rock in beautiful Hyden. If you're looking for a fun and action-packed itinerary to get you there from Perth, Pathways to Wave Rock is the one for you.



THE SOUTH WEST EDGE

- 12 - 14 days
- Sealed roads

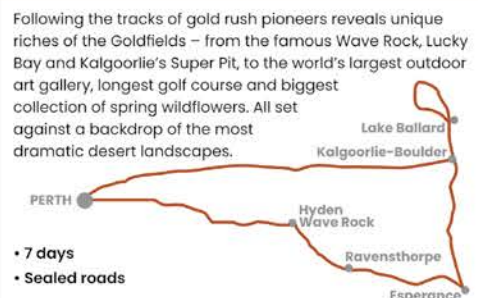
The South West Edge is an epic 12 day trip around the Southern Tip of Western Australia from Perth to Esperance. It takes you through wine regions, towering forest and along the white-sand beaches of Esperance. Before heading back to the City, choose to stop between the rich history of Kalgoorlie-Boulder or head to Wave Rock in beautiful Hyden.



OCEAN TO OUTBACK LOOP

Following the tracks of gold rush pioneers reveals unique riches of the Goldfields - from the famous Wave Rock, Lucky Bay and Kalgoorlie's Super Pit, to the world's largest outdoor art gallery, longest golf course and biggest collection of spring wildflowers. All set against a backdrop of the most dramatic desert landscapes.

- 7 days
- Sealed roads



THE NULLARBOR

- 2 days
- Sealed roads

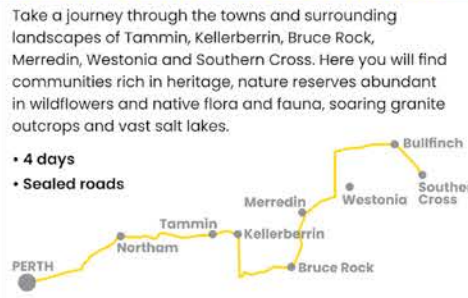
Driving across the Nullarbor is a bucket list experience and considered one of the world's most epic road trips. Spanning from Norseman in WA to Ceduna in SA, it's only when you're on the road, that you'll truly gain an appreciation of its vast and wide interior.



EASTERN WHEATBELT SELF-DRIVE TRAIL

Take a journey through the towns and surrounding landscapes of Tammin, Kellerberrin, Bruce Rock, Merredin, Westonia and Southern Cross. Here you will find communities rich in heritage, nature reserves abundant in wildflowers and native flora and fauna, soaring granite outcrops and vast salt lakes.

- 4 days
- Sealed roads



THE HOLLAND WAY & THE JOHN HOLLAND TRACK

Embark on a real Australian outback adventure following a pioneering route created by John Holland through rugged bushland and woodlands. Connecting Broomehill in the southern Wheatbelt to Coolgardie in the Goldfields, this is an adventurous and fun 4WD route.

- 3 days
- Sealed & unsealed roads



ROAD TO THE ROCK

- 9 days
- Sealed & unsealed roads

This epic, 9-day road trip takes you from Perth, north to the Gascoyne Murchison region of Western Australia. You'll weave your way through gorgeous country towns, historical sites, station stays, carpets of wildflowers (in spring) and the world's biggest rock, Mount Augustus.



GOLDEN QUEST DISCOVERY TRAIL

- 6 days
- Sealed & unsealed roads

Unearth the riches of the Goldfield's 120-year gold rush history - from the mind-blowing buzz of one of the largest open-cut gold mines on earth, to amazing ghost towns and the striking Antony Gormley Statues on Lake Ballard.



THE OUTBACK WAY

- 4 days
- Unsealed roads

The Outback Way is one of Australia's great odysseys. Known as 'Australia's Longest Shortcut', the route runs from Laverton, Western Australia to Winton in Queensland. The Outback Way crosses central Australia and is fast becoming one of the must-see and must-do drive routes coast to coast. Permits required.



WHEATBELT WAY

- 4 days
- Sealed roads

Take a trip through the fascinating Northern Wheatbelt along the Wheatbelt Way! This is an area that boasts a rich and extensive history, charming and friendly people, and all located in a diverse and truly Australian landscape.



CANNING STOCK ROUTE

- 15 days
- 4WD track

The Canning Stock Route is an internationally recognised 'Iconic Journey of Australia'. The remote trail runs from Halls Creek in the Kimberley region of Western Australia to Wiluna in the Northern Goldfields. Stretching 1,850km, it is the longest historic stock route in the world and is perfect for experienced Outback 4WDers and we recommend travelling with another vehicle or in a convoy. Permits required.



Free Download

Click [here](#) to download our FREE 27 Epic Road Trips Guide



Top 13 EXPERIENCES



1. Connect with unspoilt nature in Esperance and get up close with the Lucky Bay kangaroos
2. Discover one of the world's largest outdoor galleries at Lake Ballard
3. Marvel at rare and exquisite wildflowers throughout the vast outback
4. Detour off the coast highway to experience rural lifestyle with an outback station stay

5. Catch some waves of a different kind at Wave Rock
6. Journey along the Golden Quest Discovery Trail and uncover the stories of prospecting and pioneers
7. Surround yourself in a biodiversity-rich paradise within Fitzgerald River National Park
8. Discover paddock to plate and farm life experiences throughout the Wheatbelt

9. Be awestruck by the outback's dark skies and the brilliance of its stars
10. Travel back in time and visit Gwalia ghost town
11. Embark on a hike or simply marvel at the world's largest rock, Mount Augustus
12. Hit the road and explore the artfully quirky Tin Horse Highway

13. Embark on a tour along the Public Silo Trail to witness awe-inspiring art on a grand scale

Click [here](#) to download our Annual Holiday Planner





📍 BLUE HAVEN BEACH

Esperance

[BACK TO CONTENTS](#)

Esperance and the Fitzgerald Coast, located on the remarkable south coast of Western Australia, presents some of the state's most pristine and untouched coastal scenery, national parks, spectacular walking trails and authentic culture.

The brilliant blue waters, snow-white beaches and over 100 islands create a dazzling contrast to the red earth of the surrounding outback. It's the perfect place to indulge your love of nature and energise the soul with fresh clean air swept from the southern oceans.

TOP ATTRACTIONS

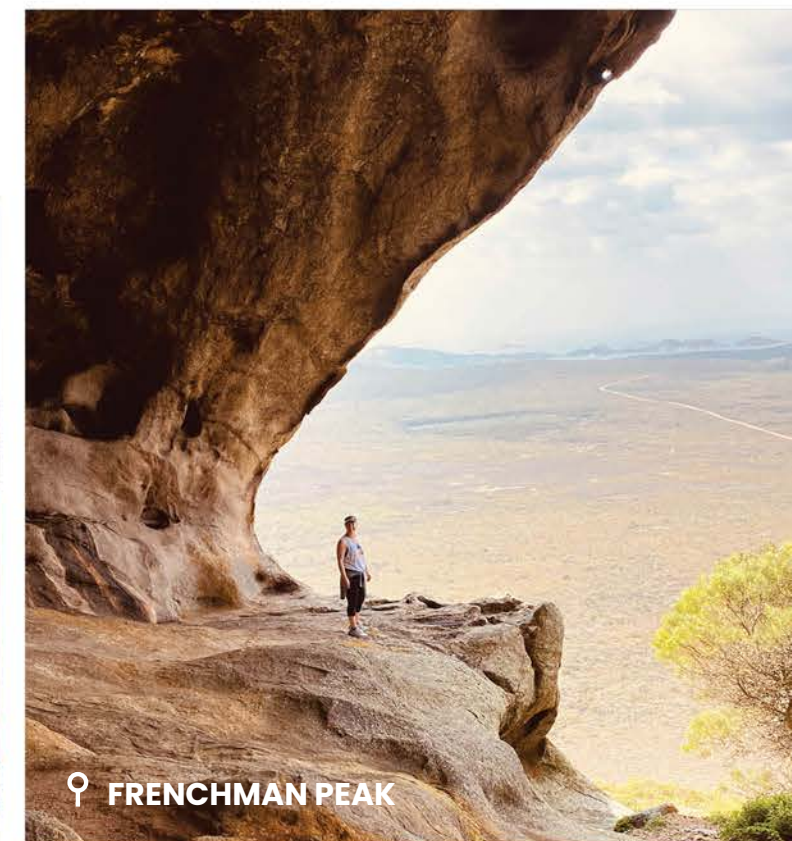
- Australia's whitest beach – Lucky Bay with beach Kangaroos
- Cape LeGrand National Park – camping, walk trails, wildlife, beaches
- The Esperance Stonehenge, the only full-size replica of the original Stonehenge in the UK.
- Spectacular walking trails
- Woody Island
- Coastal experiences: whales, dolphins, sea lions and diving
- Frenchman's Peak
- Fitzgerald River National Park
- Indigenous cultural experiences

How To Get There

- 8 hrs drive from Perth via the [Road to Esperance](#)
- 1 hr 10 min flight – REX
- 4 hrs drive from Kalgoorlie
- Journey along the [South West Edge](#)



📍 CHAPMANS POINT



📍 FRENCHMAN PEAK

ESPERANCE ROADTRIPS



ROAD TO ESPERANCE

5 days | Sealed roads

Esperance is an absolute haven of natural wonders. You'll find an abundance of white-sand beaches, rugged national parks and the clearest ocean water. Esperance is just over 700km from Perth and the drive to get here is one EPIC road trip!

[LEARN MORE](#)



GREAT OCEAN DRIVE

1-2 days | Sealed roads

The Great Ocean Drive is 40km circular loop that showcases a vast range of coastal elements such as stunning beaches, rocky headlands, small bays, steep cliffs and hidden ocean pools.

[LEARN MORE](#)



RAVENSTHORPE RANGES

2-3 days | Sealed & unpathed roads

The Ravensthorpe Range is 45km long and has a number of walk and drive trails that offer panoramic views of the district, and its mining history, home to one of the largest collection of Eucalyptus species in the world and simply exploding with wildflowers during spring.

[LEARN MORE](#)



SOUTH WEST EDGE

12 days | Sealed roads

The South West Edge hero route is a 12 day adventure that traverses 1200km from Perth to Esperance, a road trip that will fill your lungs, leave you in awe, and have you breathing more deeply.

[LEARN MORE](#)



♀ **ESPERANCE BEACH**

ESPERANCE

Trape Ready Product →



Accommodation



COMFORT INN BAY OF ISLES

📍 32 The Esplanade, Esperance WA 6450

The Comfort Inn Bay of Isles Motel and function centre is situated on the Esplanade in the Esperance town centre. A leader in quality accommodation in Esperance and a perfect place to base yourself to explore the spectacular beaches.

The motel has 62 luxury rooms, each one containing the facilities to make your stay comfortable. The fully licensed a la carte restaurant 'Eljays' is open for breakfast 7 days and in the evening for dinner Monday to Saturday.

For a relaxing afternoon why not indulge yourself in a refreshing dip in our swimming pool. The centre of town and shopping outlets are a 2-3 minutes walk, and the local jetty is an easy 5-10 minute walk.

For the romantic at heart, a sunset stroll along the beach is the perfect way to end your day and begin your evening.

Key Features

- 62 private rooms
- Breakfast and dinner available from Eljays Restaurant
- Bar and restaurant
- Onsite Carpark
- Conference facilities
- In house movies
- Laundry
- Playground
- Room service
- Spa (in select rooms)
- Swimming pool
- WiFi
- Wheelchair Access

Find out more!



Contact Details

Jen and Brad Rider, Managers

P: +61 8 9071 9000 E: admin@comfortinnbayofisles.com.au W: comfortinnbayofisles.com.au

Accommodation



ESPERANCE CHALET VILLAGE

📍 29 Frank Freeman Drive, Esperance
WA 6450

Esperance Chalet Village is a unique bush coastal estate and is a collection of laid back self contained cabins, chalets and shacks all individually styled – an idyllic hideaway located on the edge of town at picturesque Bandy Creek.

Nestled around mature trees and within walking distance to pristine beaches and a short 5km bike ride or drive to the heart of Esperance's town centre, Esperance Chalet Village is a peaceful holiday base to enjoy stunning natural attractions like Cape Le Grand National Park and Lucky Bay.

ECV hosts events in the bespoke and intimate space, The Creek House including wellness retreats, corporate gatherings and weddings. Catering and kitchen facilities on site.

Escape the ordinary and experience village life.

Key Features

- 6 Studio Chalets
- 4 Large Chalets
- 4 Shacks
- 2 Log Cabins
- 1 Cottage
- BBQ and cooking facilities
- Bike hire (free)
- Function facilities
- Carpark
- Washing machine
- Wedding facilities
- WiFi

Find out more!

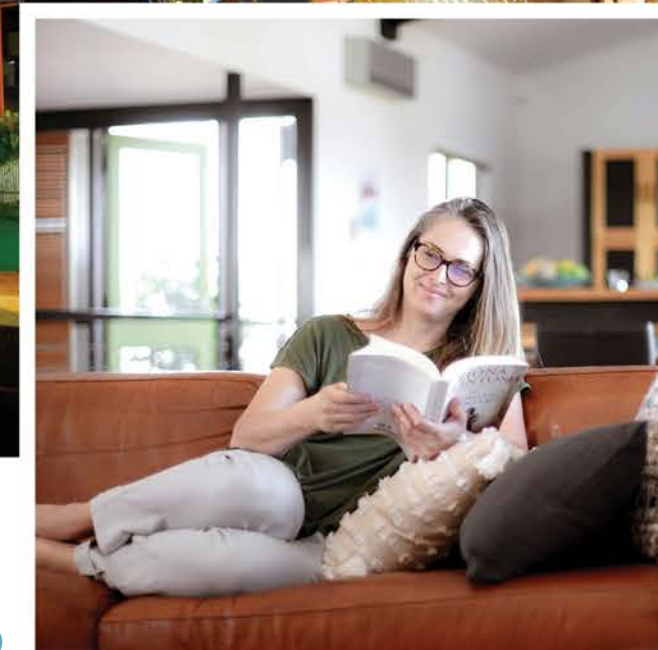


Contact Details

Fiona Shillington, Owner

P: +61 8 9071 1861 E: fiona@esperancechaletvillage.com.au W: esperancechaletvillage.com.au

Accommodation



ESPERANCE ISLAND VIEW APARTMENTS

📍 14/15 The Esplanade, Esperance WA 6450

For a totally different experience stay at the award winning architecturally designed striking blue town houses Esperance Island View Apartments. Ideally located between the town centre and fishing jetty enjoy the panoramic ocean views from these stunning apartments decorated with paintings by local artists.

Enjoy your stay in Esperance in fully self-contained, modern, clean, crisp accommodation with large balcony or courtyard, featuring your own gas barbecue and outdoor dining setting. Luxuriously spacious and environmentally friendly, these apartments are sunny and warm in winter and cool and breezy in summer. Fully landscaped with private gardens.

Key Features

- One, two and three bedroom apartments
- Special rates for corporate bookings
- Spacious living and dining room
- Queen, king or single beds
- Fully equipped kitchen and laundry
- Large LCD TV and DVD player
- Stereo system
- WiFi
- Furnished balcony or courtyard
- Private, landscaped gardens
- Private BBQ
- Beach access
- Onsite parking
- 24 hour reception

Find out more!



Contact Details

Wayne Halliday, Owner

P: +61 8 9072 0044 E: admin@esperanceapartments.com.au W: esperanceapartments.com.au

Accommodation



HEYSCAPE

📍 Esperance WA 6450

Heyscape Tiny cabins are located just 20 minutes from town, between a farm and a small olive grove, on the doorstep from Cape le Grand National Park in Esperance. Heyscape Esperance offer 4 tiny cabins, fully equipped with maximum comfort from a queen-sized bed & bedding (sheets & quilt), pillows and even reading lights, to an indoor kitchenette and an outdoor BBQ with all your essential cookware and a small fridge. The cabins are 2wd accessible, but weather dependent as they are located on working farm.

Key Features

- 4 tiny cabins suitable for singles and couples
- Queen Bed & linen
- Hot Shower & Towels
- Private Toilet
- Campfire grill / BBQ
- Wood fire
- Air Con
- Two-Burner Stove
- Sink & Drinking Water
- Chair & Picnic Table
- Salt & Pepper
- Eco Hand & Body Wash
- Guaranteed Peace & Quiet

Find out more!



Contact Details

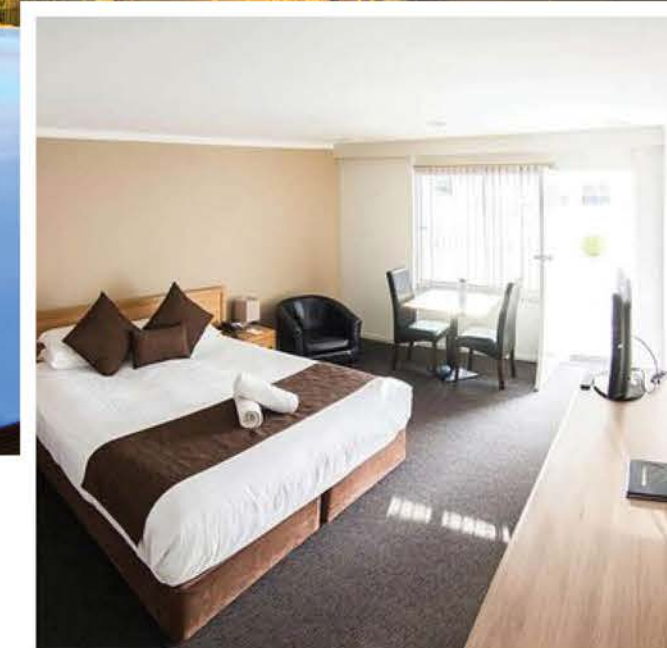
Louisa Choi, Marketing Manager

P: +61 458 864 402

E: louisa@heyscape.com.au

W: heyscape.com.au/

Accommodation



HOSPITALITY ESPERANCE SURESTAY COLLECTION BY BEST WESTERN

📍 44-46 The Esplanade, Esperance WA 6450

Hospitality Esperance, SureStay Collection by Best Western is ideally located in the town centre overlooking Esperance Bay and within close walking distance to local attractions, shopping and restaurants making it the ideal base from which to explore the region.

The motel has well-appointed motel rooms with private facilities, reverse cycle air-conditioning, mini-bar, refrigerator, complimentary Wi-Fi and Foxtel (including sport and movie channels). On-site facilities include a barbecue area and outdoor swimming pool.

The cocktail bar offers delicious pre-dinner drinks before sitting down for an a-la-carte dinner at the renowned Seasons Restaurant.

Key Features

- Queen, King, Executive and Family room types
- Breakfast and dinner available from Seasons Restaurant
- Facilities
- Bar and restaurant on-site
- BBQ facilities
- Business facilities
- Foxtel channels
- Free parking
- Free guest laundry
- Room service
- Swimming pool
- Free WiFi

Find out more!



Contact Details

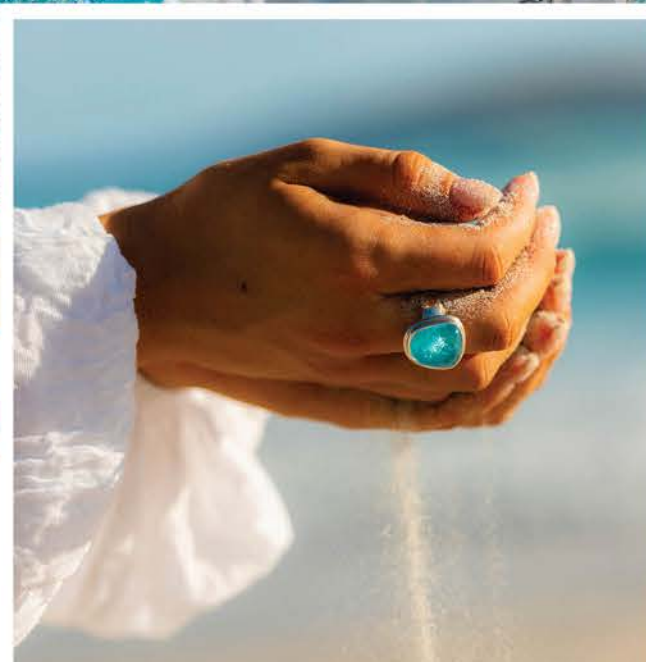
Amanda Hoyne, Sales and Marketing Director

P: +61 8 9425 5544

E: amanda@hospitality.com.au

W: hospitalityinnesperance.com.au

Tour Operator



CINDY POOLE GLASS GALLERY TOURS

📍 23 Longbottom Ln, Pink Lake WA 6450

Cindy Poole is a glass artist that has been working with glass since 1995. Her practise is based on kiln-formed glass. She is inspired by her surroundings, the natural beauty of Western Australia, and pay homage to nature. Gallery tour in a self-paced intriguing, and informative journey, "Discover" tour or "Discover and Create" tour offer a behind-the-scenes, hands on workshop tour. The tours make you discover the back stories of the Esperance landscapes, local public art and sustainability best practices through the hands and lens of Cindy Poole, a designer-maker local storyteller.

Creativity, authentic craftsmanship, and natural beauty merge with innovative sustainable design concepts through handcrafting and kiln-forming to create pieces of stylish glassware, jewellery and home décor using art glass and glass bottle waste as the raw material.

Small group sizes range between 6-16 people. Tours operate week-days and on demand. Coach, cruise and corporate group rates are available.

Key Experiences

Discover Tour Experience: An immersive experience in the gallery and studio for a behind-the-scene journey. Experience the design process, tools and skills to create beautiful kil-fired glass art and reimagine glass waste.

Key Features

- Carpark
- Pet Friendly - Enquire
- Family Friendly
- Coach Parking
- Public Toilet
- Shop / Gift Shop
- Interactive Centre
- Gallery / Museum

Find out more!



CONTACT DETAILS

Cindy Poole, Glass Artist, Owner

P: +61 8 497 714 059 **E:** sales@cindypoole.com.au **W:** cindypoole.com.au/

Tour Operator



ESPERANCE ISLAND CRUISES

📍 72B The Esplanade, Esperance WA 6450

Esperance Island Cruises offers wildlife and coastal sightseeing cruises, departing from Taylor St Jetty in the CBD. The scenic wildlife cruise go through eight islands in the Recherche Archipelago to experience the spectacular wildlife up-close. Their regular sightings include: New Zealand Fur Seals, Australian Sea Lions, Cape Barren Geese, Common and Bottlenose Dolphins, White-Bellied Sea Eagles (including feeding) and Whales (season dependent). The cruise are suitable for families and accessible for all abilities.

Key Features

- Full commentary
- Morning tea
- Snorkelling
- Complementary transfers from Esperance hotels

Find out more!



CONTACT DETAILS

Jaimen Hudson, Owner

P: +61 8 890 715 111 **E:** info@esperancecruises.com.au **W:** esperancecruises.com.au

Tour Operator



ESPERANCE FARM EXPERIENCE

📍 Kirwin Rd, Merivale WA 6450

Esperance Farm Experience is about 25 minutes out of town and provides an opportunity for participants to see, touch and taste life on a mixed farming enterprise via a guided tour of the property, the Oake Marsh Farm. Tours are seasonally based. It includes a tour of the machinery shed, the shearing shed and the livestock yards, with an opportunity for to walk in the paddocks, get up close and personal with the pet calves and lambs and wonder at their working dogs.

Key Experiences

- Half Day tour of Oake Marsh Farm
- Full Day collaborative agricultural tour
- NEW - Two hour Night Walk "son et lumiere on Oake Marsh Farm"

Find out more!



CONTACT DETAILS

Renee Poot, Owner

📞: +61 438 935 996 ✉: EspFarmExp@gmail.com 🌐: esperancefarmexperience.com

Tour Operator



HELISPIRIT

📍 The Esplanade, Esperance WA 6450

Multi-award-winning HeliSpirit operates scenic helicopter adventures from the Esperance Foreshore showcasing the pristine coastline.

The Esperance landscape is an impressive sight from above and discovering the impressive natural wonders of Esperance is an experience not to be missed. Scenic highlights which can be seen on our flights include the Recherche Archipelago, Cape Le Grand, and Cape Arid National Parks, including Woody Lake, Frenchman Peak, Lucky Bay, Hellfire Bay, Blue Haven, Twilight Bay and Middle Island.

HeliSpirit has partnered with Woody Island Eco Tours to offer scenic helicopter transfers out to the island so that guests can join their offered day tours or self-explore the island.

- **Woody Island Tours:** Options include a one way transfer to the island or a half day tour to include a guided walking tour, free time to explore, and a drink at Black Jack's Bar.
- **Esperance Tours:** All departing from the Esperance Bay helipad, the tours will fly over Cape Le Grand National Park, Lucky Bay, Frenchman Peak, Thistle Cove, Hellfire Bay, Twilight Bay, Blue Haven and Woody Lake.

Find out more!



Key Experiences

CONTACT DETAILS

Tessa MacCleod, Sales Executive

📞: +61 484 831 512 ✉: tessa@kimberleyexperiences.com.au 🌐: helispirit.com.au

Tour Operator



FLY ESPERANCE / TOUR ESPERANCE

📍 87b Dempster St, Esperance WA 6450

Fly Esperance is Esperance's only local scenic flight company and operates 365 days of the year. Scenic flights take visitors to see the beautiful coastline and snow-white beaches of Cape Le Grand, Lucky Bay and beyond.

Tours around the Esperance area are available by plane or luxury four wheel drive, with options to include lunch and/or local activities.

Key Experiences

- **Scenic Flights:** Flights range from quick 20 minute trips over the Esperance beaches to half day pub crawl tours. Sights include Twilight Bay, Lake Hillier and Cape Le Grand.
- **4x4 Beach Adventure Tours:** A luxury 4x4 tour around the Cape Le Grand National Park including Lucky Bay, Frenchman Peak, Wylie Beach and Thistle Cove. The tour can be added to a scenic flight package to see the area from the ground and air.
- **Packages:** Various packages are available to combine a scenic flight, 4x4 tour, local activities or a pub lunch.

Find out more!



CONTACT DETAILS

Chris Hurst, Owner

P: 1800 951 251 E: info@flyesperance.com W: flyesperance.com

Tour Operator



UNTAMED ESPERANCE

📍 55 William Street, Perth WA 6000

Untamed Escapes tour in Esperance is about Adventure, Wildlife, Wellness and Epicurean Experiences. Small group bus tours depart Perth. They offer Adventure Tours, Exclusive Escapes, Yoga Retreats, Tailor-Made Tours and Wildlife Tours.

Recognised as a Green Travel Leader, Advanced Eco-Accredited Operator and Climate Change Innovator by Eco-Tourism Australia, Untamed Escapes are passionate about taking a regenerative approach to tourism. Their vision is to ensure that each tour contributes to the flourishing of the ecosystems and communities visited, also giving travellers opportunities to 'give back' on their trips.

Key Experiences

- **4 day Esperance Wellness Retreat:** It is a private Esperance wellness retreat from Perth to Esperance to connect you with mind, body and Country
- **Adventure Tours:** Untamed Escapes offers adventure tours and camping tours.

Find out more!



CONTACT DETAILS

Craig Haslam, Owner

P: +61 886 870 455 E: travel@untamedescapes.com.au W: untamedescapes.com.au/destinations/western-australia



♀ MERREDIN SILO ART

The WHEATBELT

[BACK TO CONTENTS](#)

Experience a patchwork of golden fields, character towns and self-drive routes in the stunning wheatbelt.

The Wheatbelt is home to the world-famous Wave Rock, as well as character townships, miles of golden fields, charming rural farms and great outback self-drive adventures. Being only a short drive of Perth, it's no wonder this is such a popular family holiday destination.

TOP ATTRACTIONS

- Visit the world-famous Wave Rock
- Experience a Farm Stay
- Take a drive down the quirky Tin Horse Highway in Kulin
- Search for rare and elusive wildflowers
- Delve into the region's history at a country museum
- Follow the Public Silo Trail
- Enjoy a night out at the Koorda Drive In
- Hike around the Elachbutting Rock

How To Get There

- Good network of sealed roads and gazettes drive trails
- Transwa coaches to many of the Wheatbelt towns
- Tre Prospector train stop in Cunderdin, Kellerberrin, Merredin, Southern Cross and Kalgoorlie



♀ WAVE ROCK



♀ KUKERIN

WHEATBELT ROADTRIPS



EASTERN WHEATBELT SELF-DRIVE TRAIL

4 days | Sealed roads

The Eastern Wheatbelt self-drive trail takes visitors on a journey through the towns and surrounding landscape of Tammin, Kellerberrin, Bruce Rock, Merredin, Westonia and Southern Cross.

[LEARN MORE](#)



PUBLIC SILO TRAIL

5 days | Sealed roads

Explore this colourful route through the Wheatbelt and Great Southern following the PUBLIC Silo Trail, which has transformed by a string of massive grain silos into works of art.

[LEARN MORE](#)



THE HOLLAND WAY AND JOHN HOLLAND TRACK

3 days | Sealed and unsealed roads

Embark on a real Australian outback adventure following a pioneering route created by John Holland through rugged bushland and woodlands.

[LEARN MORE](#)



GRANITE & WOODLANDS DISCOVERY TRAIL

2 days | Sealed roads

Explore one of the world's greatest untouched temperate woodlands, right here in Western Australia. Stretching 300km from Hyden and Wave Rock to Norseman, the Granite and Woodlands Discovery Trail is an adventurous road trip through remarkable landscape.

[LEARN MORE](#)



PATHWAYS TO WAVE ROCK

3 days | Sealed roads

Ready to surf an inland wave? Then it's time to hit the road and head to Wave Rock in beautiful Hyden.

[LEARN MORE](#)



WHEATBELT WAY

4 days | Sealed roads

Take a trip through the fascinating Northern Wheatbelt with the Wheatbelt Way! This is an area that boasts a rich and extensive history, charming and friendly people, and all located in a diverse and truly Australian landscape.

[LEARN MORE](#)



WHEATBELT

Trape Ready Product →



Accommodation



MARY'S FARM COTTAGES & CAMBINATA YABBIES

📍 3645 Dumbleyung-Lake Grace Rd,
Kukerin WA 6352

Mary's Farm Cottages is located near Kukerin and just down the road from Australia's largest yabby farm, Cambinata Yabbies, in the heart of Western Australia's Wheatbelt country.

The Nenke family first took up the home property in 1912 and moved onto the land in 1914. Today it is home of third, fourth and fifth generation family members. Mary's Farm Cottages is mindful of the importance of looking after the environment for future generations so the village is eco-friendly.

Cambinata Yabbies is the largest and most sophisticated yabby processing facility in Australia. Guests can enjoy a tour and have the opportunity to purchase delicious gourmet products. Pre-ordered steamed yabbies are available either at Cambinata or delivered to Mary's Farm Cottages.

Mary's Farm Cottages is perfect for an overnight stay or a family getaway, being close to Kukerin and Lake Grace.

Key Features

- Eight cottages, comprising 16 motel units and 1 & 2 bedroom units with their own kitchen and lounge seating area
- Interactive tours available at Cambinata Yabbies, a local yabby farm
- BBQ facilities
- Ensuite bathrooms
- Farm activities
- Free parking
- Kitchen
- Laundry
- Playground

Find out more!



Contact Details

Mary Nenke, Owner

P: +61 8 9864 6054

E: marysfarmcottages@gmail.com

W: marysfarmcottages.com.au



Accommodation

WAVE ROCK HOTEL / MOTEL

📍 2 Lynch St, Hyden WA 6359

The Wave Rock Hotel is situated in the town of Hyden and just 3km from Wave Rock. Offering 55 well-appointed motel units or one of the three executive suites, well equipped with spas, bars and private gardens.

All units have private bathrooms, reverse-cycle air-conditioners, tea and coffee making facilities, microwaves, fridges, telephones and TV's.

The bar is open seven days a week offering snacks and drinks, and there are two onsite restaurants to choose from.

Coach groups, weddings and conferences can be accommodated at the Sandalwood Restaurant, catering for groups from 20 to 175. Bookings are essential.

Key Features

- 55 guest rooms
- Standard, Executive and Family rooms available
- Breakfast and dinner available daily from onsite restaurants
- Facilities
- Bar and restaurant onsite
- Conference facilities
- Ensuite bathroom
- Gym
- Laundry
- Spa (select rooms only)
- Swimming pool
- Tour desk
- WiFi

Find out more!



Contact Details

Sheenagh Collins, Owner Operator

P: +61 429 805 052 E: hydenhotel@bigpond.com W: waverock.com.au



Accommodation

WAVE ROCK RESORT

📍 1 Wave Rock Rd, Hyden WA 6359

Wave Rock Resort has been developed to cater for guests who would like to get away from it all in a 'home away from home' setting.

The Wave Rock Resort offers a total of 14 two bedroom cottages situated on the shores of Lake Magic, 1 kilometre north of Wave Rock.

Lake Magic is a naturally occurring gypsum-based salt lake, which has never been dry. Nothing grows or lives in the lake due to the gypsum content. It is a clear lake with white beach sand around the perimeter.

Guests can enjoy free entry to the Natural Salt Spring at the Resort, a 6m deep swimming pool-like gypsum pond whose buoyancy and therapeutic properties are greater than those of the Dead Sea.

Key Features

- 14 two bedroom cottages
- One accessible cottage
- Free entry to the Natural Salt Spring
- BBQ facilities
- Ensuite bathroom
- Free parking
- Kitchen and lounge areas Laundry
- Linen provided
- WiFi

Find out more!



Contact Details

Sheenagh Collins, Owner Operator

P: +61 429 805 052 E: hydenhotel@bigpond.com W: waverock.com.au



📍 BOULDER STREET, KALGOORLIE

GOLDFIELDS

[BACK TO CONTENTS](#)

The Goldfields offer a real Australian outback adventure and a fascinating insight into the region's colourful gold rush history.

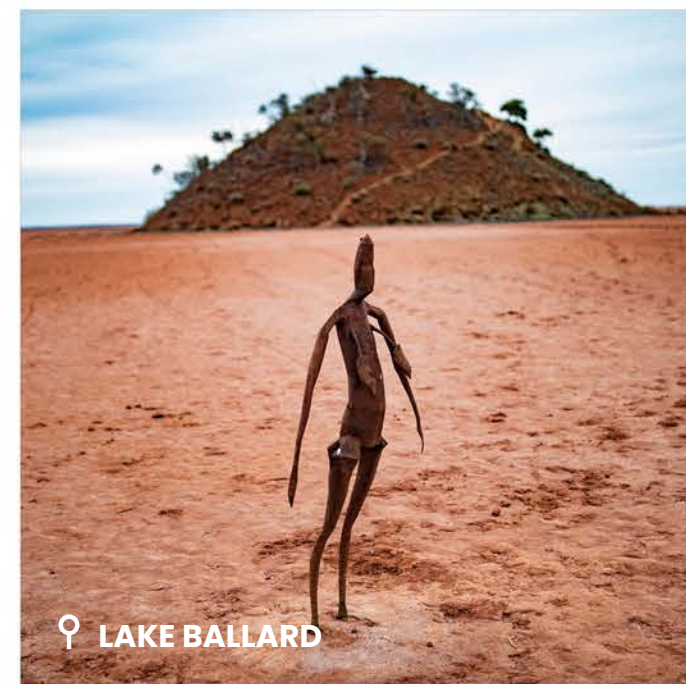
The towns and small communities of the Goldfields were built on the hopes and dreams of fortune-seekers who flocked to Western Australia following the discovery of gold in the 1890s.

TOP ATTRACTIONS

- Have a beer with a horse name Willie in Kookynie
- Check out the world's most isolated art gallery at Lake Ballard
- Marvel at the Super Pit, largest open cut Gold Mine in WA.
- Pan for gold at Hannans North Tourist Mine
- Visit the Museum of the Goldfields
- Leave your mark at Broad Arrow Tavern
- Explore Gwalia ghost town
- Research your Goldfields family history/ancestry with the Eastern Goldfields Historical Society

How To Get There

- 6 hours drive from Perth
- 4 hours drive from Esperance
- 1 hour flight – Qantas & Virgin
- Kalgoorlie Explorer Fare – International Economy flights to Australia at a discounted rate.



📍 LAKE BALLARD



📍 COOLGARDIE MUSEUM

GOLDFIELDS ROADTRIPS



GOLDEN QUEST DISCOVERY TRAIL

6 days | Sealed & unsealed roads

The Golden Quest Discovery Trail unearths the riches of the Goldfield's 120-year gold rush history – from the mind-blowing buzz of one of the largest opencut gold mines on earth, to amazing ghost towns and the striking Antony Gormley Statues on Lake Ballard.

[LEARN MORE](#)



THE OUTBACK WAY

4 days | Unsealed roads

The Outback Way is one of Australia's great odysseys. Known as 'Australia's Longest Shortcut', the route runs from Laverton, Western Australia to Winton in Queensland.

[LEARN MORE](#)



GOLDEN PIPELINE TRAIL

3 days | Sealed roads

The Golden Pipeline Heritage Trail celebrates one of the world's greatest engineering marvels. The trail is full of historic gems and interesting stops.

[LEARN MORE](#)



NORSEMAN HERITAGE TRAIL

1-2 hours | Sealed roads

The Dundas Coach Road Heritage Trail is a historic and fascinating loop trail, featuring 10 key places of interest and fascinating interpretive stories that help build a picture of life in the early years along the Coach Road.

[LEARN MORE](#)



GUNBARREL HIGHWAY

6 days | Unsealed roads

Built by surveyor Len Beadell, this 1,400km outback adventure is perfect for the confident 4WD enthusiast.

[LEARN MORE](#)



ANNE BEADELL HIGHWAY

6 days | Unsealed roads

The Anne Beadell Highway is an awe-inspiring route that passes through extremely remote desert areas. Stretching 1,350km from Laverton through to Coober Pedy, SA.

[LEARN MORE](#)



LEONORA LOOP TRAILS

1-3 hours | Sealed & unsealed roads

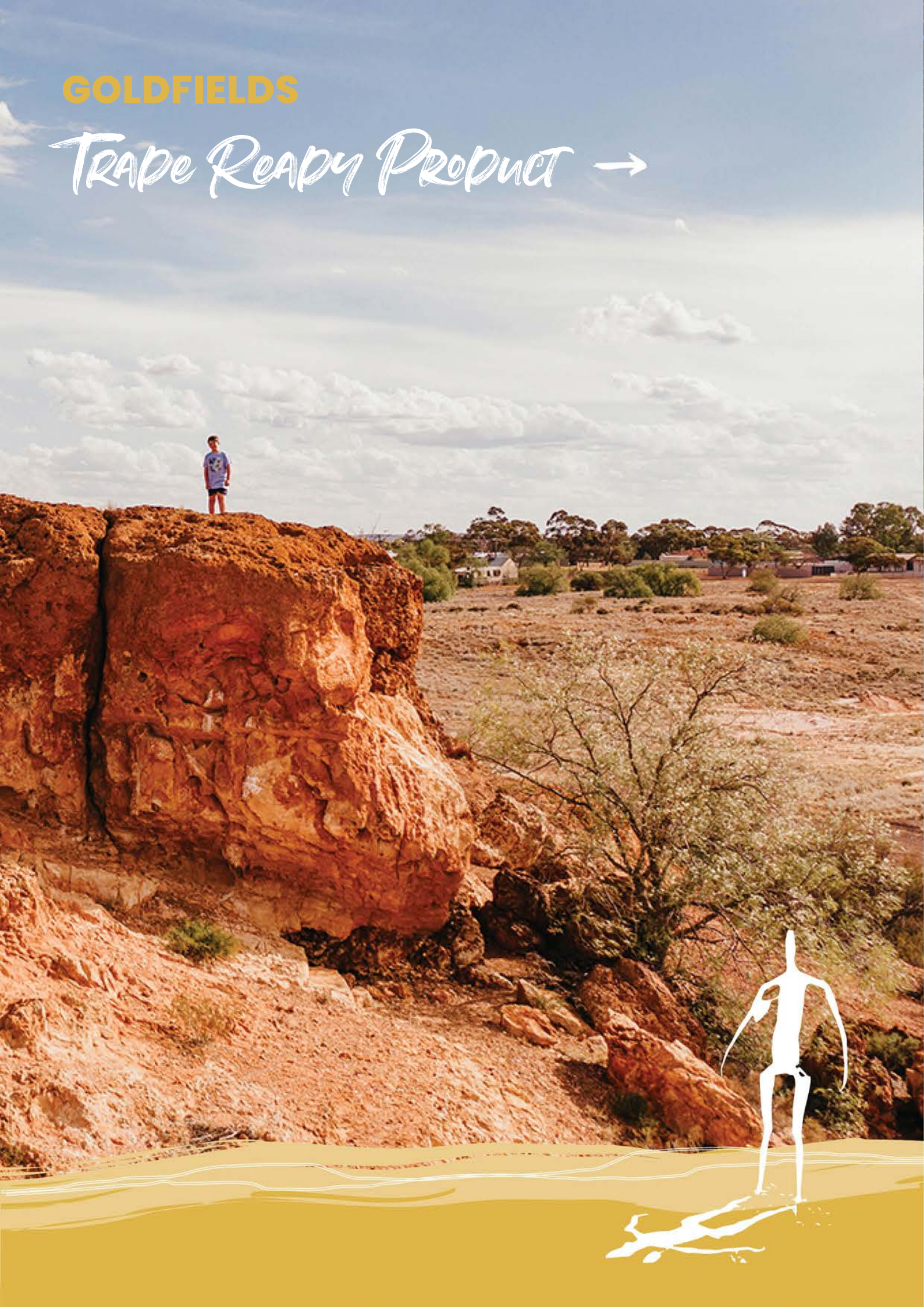
Leonora is rich in history with amazing stories of the gold rush era. Throw in some incredible natural attractions and you've got a pretty amazing outback location!

[LEARN MORE](#)



GOLDFIELDS

Trape Ready Product →



Accommodation



DISCOVERY PARKS – BOULDER

📍 201 Lane St, South Boulder WA 6432

Discovery Parks – Boulder by Holiday & Caravan Park in Lane St Kalgoorlie-Boulder is ideally located at the south edge of the town. It offers a unique outback experience, eight hours drive from Perth and is an ideal starting point for those exploring the region.

Discovery Parks – Boulder offers fully self-contained, comfortable and affordable accommodation that offers home comforts suitable for leisure and work stay guests with an onsite dining hall available, offering meals 7 days a week.

Key Features

- Standard 1 or 2 bedroom Cabin, Economy Cabin, Standard A-Frame Cabin
- Superior Studio Room, Superior and two bedroom room types
- Standard Van Room
- Economy Room or Standard room
- Ensuite Powered Site, Powered Site and Unpowered Site
- BBQ
- Camp Kitchen
- Dump Point
- Kiosk/Store
- Laundry
- Restaurant
- Swimming Pool
- WiFi
- Dogs allowed

Find out more!



Contact Details

Dave and Karen Hopper, Managers

P: +61 8 9093 1266 E: boulder.managers@discoveryparks.com.au W: discoveryholidayparks.com.au

Accommodation



HOSPITALITY KALGOORLIE SURESTAY COLLECTION BY BEST WESTERN

📍 560 Hannan St, Somerville WA 6430

Hospitality Kalgoorlie, SureStay Collection by Best Western offers friendly country hospitality ideally located just one and a half kilometres from the city centre on historical Hannan Street.

Guests can relax by the swimming pool or enjoy a casual meal in the barbecue area.

The on-site restaurant, Katherine Station, is open for breakfast and evening meals, with a special menu available for children.

The well-appointed rooms offer complimentary Foxtel (including sport and movie channels), Wi-Fi, a mini-bar and refrigerator, reverse cycle air-conditioning, telephone and a hairdryer.

Key Features

- Standard, Executive and two bedroom room types
- Breakfast and dinner available from Katherine Station
- Facilities
- Bar and restaurant on-site BBQ facilities
- Business facilities
- Foxtel channels
- Free parking
- Free guest laundry
- Room service
- Swimming pool
- Complementary WiFi

Find out more!



Contact Details

Amanda Hoyne, Sales and Marketing Director

P: +61 8 9425 5544 **E:** amanda@hospitality.com.au **W:** hospitalityinnkalgoorlie.com.au

Accommodation



HOOVER HOUSE

📍 Gwalia Street, Leonora WA 6438

Once the grand home of the managers of the Sons of Gwalia Gold Mine, Hoover House is a luxury Bed and Breakfast and function venue near the historical settlement of Gwalia.

The house was designed in 1897 by the mine's manager, Herbert Hoover, who later became the 31st President of the United States of America.

The building has been completely renovated and today B&B guests can enjoy Hoover's legacy – three magnificent bedrooms now opulently decorated in period style, the grand dining room where mining deals were once negotiated, and the tranquil views over the spectacular Goldfields landscape from the wide verandahs.

Hoover House is accessible either with a 2 hour 40 minute flight from Perth to nearby Leonora or by road, via Kalgoorlie and the Golden Quest Discovery Trail.

Key Features

- Three bedroom, 2 ensuite, 1 with separate bathroom
- All rooms include a full continental breakfast

Find out more!



Contact Details

Hoover House

P: +61 8 9037 7122 **E:** museum@gwalia.org.au **W:** gwalia.org.au

Accommodation



LEONORA MOTOR INN

📍 48 Tower Street, Leonora WA 6438

The Leonora Motor Inn is situated in the town of Leonora. Offering 60 spacious reverse cycle air-conditioned rooms, all with large en-suite bathrooms and just a short stroll to all local amenities. It is a great base from which to explore and experience the grandeur and splendour of the Northern Goldfields, whether it be a relaxing stay to enjoy the local friendly atmosphere, a search to find that elusive gold nugget or business commitments.

Complementary facilities include a brand-new laundry available to all guests, room service, after hours check-in and we offer a charge back facility for all meals and refreshments at the main eateries in town. There is also plenty of parking for larger vehicles and trucks.

Key Features

- 60 guest rooms
- Air-Conditioning
- BBQ Facilities
- Carpark
- Cooking Facilities
- Heating
- Internet access
- Iron/Ironing board
- Laundry
- Private Facilities
- Refrigerator
- TV
- Washing Machine
- WiFi

Find out more!



Contact Details

Ainsley Kemp, Director

P: +61 8 9037 6444 **E:** reception@leonoramotorinn.com.au **W:** leonora-motor-inn.aspx

leonora.wa.gov.au/visitors/stay

Accommodation



RYDGES KALGOORLIE RESORT AND SPA

📍 21 Davidson St, Kalgoorlie WA 6430

Rydges Kalgoorlie is conveniently located close to the Kalgoorlie town centre in the heart of the historic Western Australian Goldfields Region.

Offering 92 studio, one bedroom and two bedroom rooms, resort style swimming pool and heated spa, versatile function areas, a contemporary restaurant and an al fresco dining area all surrounded by native gardens.

Rydges Kalgoorlie is the perfect destination to complete your business needs and as a getaway to relax and take in the history of the region.

Prime West Grill Restaurant & Bar is the premier dining destination of the Goldfields. It denotes a culinary culture in Kalgoorlie by serving up fresh, innovative modern Australian cuisine; inspired by wide array of authentic, regional ingredients from countries around the world.

Key Features

- Studio, one bedroom and two bedroom accommodation options
- Breakfast and dinner at onsite restaurant Prime West Grill & Bar
- Bar and restaurant onsite Business facilities
- Ensuite rooms
- Conference and event facilities Parking
- Room Service
- Swimming Pool
- WiFi

Find out more!



Contact Details

Lisa O'Donoghue, General Manager

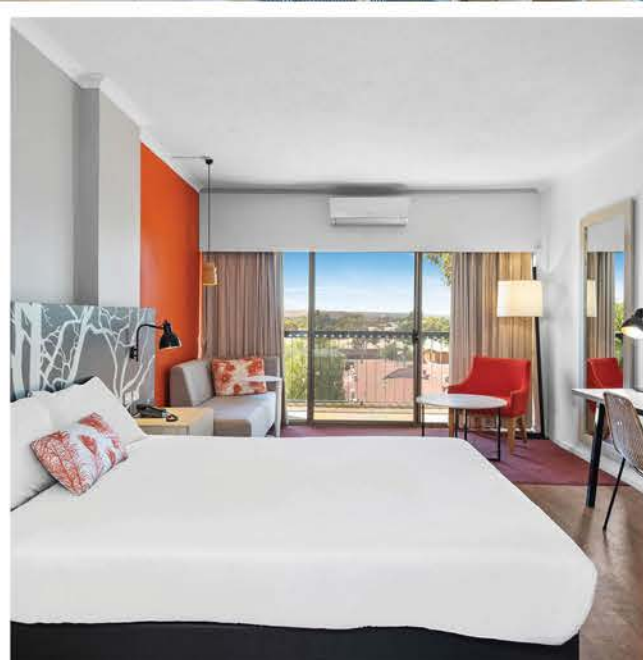
P: +61 8 9080 0800 **E:** lisa_odonoghue@evt.com **W:** rydges.com/accommodation/regional-wa/kalgoorlie

Accommodation



THE PLAZA HOTEL

📍 45 Egan Street, Kalgoorlie WA 6430



Key Features

- Suite, Deluxe King Room, Superior Queen Room, Executive Twin Room, Executive Queen Room,
- Restaurant, Room service, Bar
- Carpark
- Laundry
- Swimming Pool
- Children's Pool
- Gym
- Conference/Function Facilities
- Non Smoking
- Accessible rooms and lift available

Find out more!



Contact Details

Jaideep Bhardwaj, Hotel Manager

P: +61 8 9080 5910 E: gm@plazakalgoorlie.com.au W: plazakalgoorlie.com.au

Tour Operator



GOLDFIELDS AIR SERVICES

📍 Hangar 116, Kalgoorlie-Boulder Airport



Goldfields Air Services (GAS) offers the best view over the 'Super Pit' and the outback landscape of Kalgoorlie-Boulder.

Our experienced and professional pilots operate personalised flights from our hangar located on the eastern side of Kalgoorlie-Boulder airport.

GAS operate to anywhere in Australia from our base at Kalgoorlie-Boulder Airport, with the majority of flights being to remote outback locations not serviced by other forms of regular transport.

GAS has Commercial pilots on standby 24 hours a day to respond to your air transport requirements.

Key Experiences

- **Big Pit Scenic Flights:** Fly over the city of Kalgoorlie-Boulder, taking in the Graham Marsh designed Kalgoorlie Golf Course, Karkurla Park and Hannan Street with its impressive gold-plated

dome clocktower. Then head out over the spectacular Kalgoorlie Consolidated Gold Mines "Super Pit." Visible from space, at over 3.5km long, 1.5km wide, and 600 metres deep, the Super Pit is truly something to behold. After circling the Super pit to get an all-angles view, you will fly out to the Nickel Smelter.

- **Lake Lefroy including Big Pit Scenic Flight:** Fly over the city of Kalgoorlie-Boulder, taking in the amazing Graham Marsh Kalgoorlie Golf Course, Karkurla Park, and Hannan Street before flying over the spectacular "Super Pit". You'll then fly to the Nickel Smelter before continuing to Kambalda and Lake Lefroy.

Find out more!



Contact Details

Liz Prendergast, PA to Managing Director

P: +61 8 9093 2116 E: admin@goldfieldsairservices.com W: goldfieldsairservices.com

Tour Operator



KALGOORLIE TOURS AND CHARTERS

📍 250 Hanna Street, Kalgoorlie WA 6430

Kalgoorlie Tours & Charters commenced operation in 1973 and over the past four decades has grown to become a large privately owned luxury coach company in Western Australia.

Touring itineraries range from half-day sightseeing tours to fully catered extended tours around the Western Australian Goldfields.

Coach captains and tour guides are chosen for their love of people and commitment to being the best in the business. They are local area specialists and subject to ongoing training of the highest standard. Kalgoorlie Tours & Charters extensive fleet of five-star luxury coaches and mid-sized tour buses can accommodate any sized gathering. Itineraries can be tailored to suit special interest groups or individuals and can mobilise a private charter Australia-wide on short notice.

A rigorous maintenance program ensures vehicles are thoroughly maintained to the highest standard.

Key Experiences

- **Super Pit Tours:** Ranging for 1.5 to 2.5 hour tours, the Super Pit tours take passengers into the Fimiston Milling Plant. See the massive dump trucks up close and marvel at the view from Harvey Hut.
- **Gold Town Discovery Tour:** On this 3 hour Gold Town Discovery Tour passengers will uncover the hidden secrets of Kalgoorlie-Boulder past and present, visiting the intriguing and unique places. Visiting a number of attractions on the outskirts of Kalgoorlie-Boulder this tour will get you to the hard to reach places and memorable characters not everyone gets to see or meet.
- **Lake Ballard 'Inside Australia' Tour:** View the unique Antony Gormley's 'Inside Australia' sculptures near Menzies. Depart Kalgoorlie and see the unique vegetation of the area and many abandoned gold mining centres. The tour also passes the Goongarrie Station and the Sand Queen Gold Mine.

Find out more!



Contact Details

Tinashe Chirima, Administration Manager

P: +61 8 9021 2211 E: tinashe@goldrushtours.com.au W: kalgoorlietours.com.au



📍 GWALIA

GASCOYNE MURCHISON

[BACK TO CONTENTS](#)

The Gascoyne Murchison region is characterised by miles of rich red earth, rugged rock formations, vast cattle stations and towns built on the dreams of the wild gold rush era.

Fields of vibrant spring wildflowers are also a huge attraction of the Gascoyne Murchison region in Western Australia's Golden Outback, not to mention the towering hulk of Mount Augustus and awesome self-drive drive trails.

TOP ATTRACTIONS

- Journey to the extraordinary Mt Augustus
- Experience true outback hospitality at a Station Stay
- See carpets of everlasting wildflowers from late July to early September
- Explore the exciting Outback Pathways self-drive routes
- Discover the awesome Kennedy Range National Park
- Visit Wiluna, start of the Canning Stock Route and Gunbarrel Highway
- Take time to look at the million-star night sky in the Gascoyne-Murchison
- Explore the history of Outback towns

How To Get There

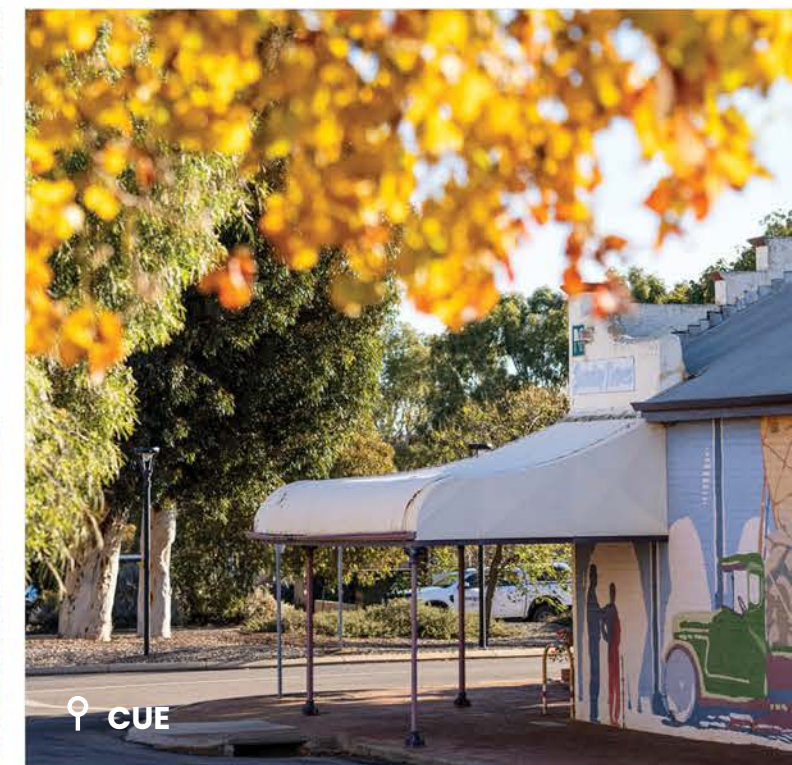
- Good network of sealed roads and all-weather roads
- Skippers flights from Perth to Wiluna(1h55), Meekatharra(2h25) and Mount Magnet(1h15)
- Transwa operates to a number of Gascoyne-Murchison town, including Yalgoo, Mount Magnet, Cue and Meekatharra



♀ MOUNT AUGUSTUS



♀ WOOLEEN POND



♀ CUE

GASCOYNE MURCHISON ROADTRIPS



ROAD TO THE ROCK

9 days | Sealed and unseal roads

The end point of this epic 9-day itinerary is Mount Augustus National Park, where the world's largest monolith reigns majestically – two-and-a-half times the size of Uluru. In season, the wildflowers steal the spotlight, painting the landscape with their vibrant colours and brilliant blooms.

[LEARN MORE](#)



KINGSFORD SMITH MAIL RUN

3 days | Unsealed roads

Hit the Kingsford Smith Mail Run in your 4WD and head north on an outback camping adventure, following the original overland mail run to the magnificent Mt Augustus. This trail takes you from Carnarvon on the Coral Coast, inland to the historic gold mining town of Meekatharra.

[LEARN MORE](#)



WOOL WAGON PATHWAY

3 days | Unsealed roads

This self-drive trail takes you from Geraldton through the Gascoyne Murchison up to Exmouth in the Coral Coast. The drive takes you through historic and timeless towns like Pindar and Murchison Settlement whilst showcasing the real Aussie landscape.

[LEARN MORE](#)



MINERS PATHWAY

4 days | Sealed and unsealed roads

This trail takes you from Paynes Find to Meekatharra, or from Yalgoo to Sandstone. Venture along the Miners Pathway and explore the wild prospecting towns that rocketed to the forefront of Western Australia's gold rush in the 1800s.

[LEARN MORE](#)



CANNING STOCK ROUTE

15 days | 4WD track

The Canning Stock Route is an internationally recognised 'Iconic Journey of Australia'. The remote trail runs from Halls Creek in the Kimberley region of Western Australia to Wiluna in the Northern Goldfields.

[LEARN MORE](#)

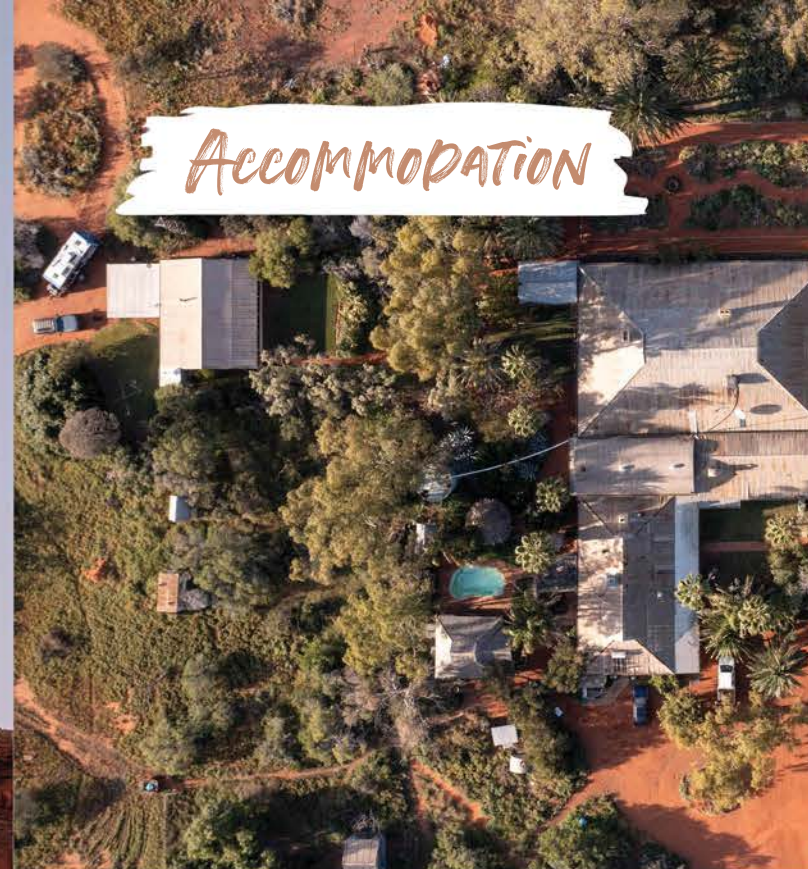
♀ CUE

GASCOYNE MURCHISON

Trape Ready Product →



Accommodation



WOOLEEN STATION

📍 Twin Peaks-Wooleen Rd, Murchison
WA 6630

Wooleen Station is a working cattle station in the outback of Western Australia. Hosts, the Pollock family, will make your stay comfortable, educational and enjoyable in the National Trust listed homestead, the self-contained rammed earth guest houses or in the camping grounds.

Wooleen offers eco-tours with David out into the rangelands and the tours include understanding of the ecology of the rangelands, the problems the pastoral industry face as a whole, the workings of the cattle property, flora and fauna, early pioneering history, aboriginal culture and the peace and quiet of the ancient landscape.

Enjoy a sunset tour of the oldest lands in the world or self-drive tours or even bush-walking experiencing at this wonderful station.

Homestead stays includes luxury accommodation in the original 1918 homestead bedrooms, home-style

cooking, and a cellar full of Western Australian wines, billiard room, library, swimming pool and an oasis of a garden.

Self-contained two-bedroom guesthouses have full kitchen facilities, bathroom and an open fireplace.

Key Features

- **Homestead:** Five homestead rooms, Home style cooked three meals a day, Shared facilities, Onsite tours, Games room, WiFi (limited), Bike hire
- **Self Contained Guesthouse:** Two self contained guesthouses, Full kitchen, Linen and towels, BBQ area Open fireplace, Board games and cards, WiFi (limited)
- **Outback Camping:** Campsites available at three locations around the station, Guests must be self sufficient, Composting toilets at some sites, Shared facilities at homestead

Find out more!



Contact Details

Frances Pollock, Proprietor

P: +61 8 9963 79732 E: frances@wooleen.com.au W: wooleen.com.au

Tour Operator



NEW LEAF CONNECT

📍 9 Waldeck Street, Dongara WA 6525

New Leaf Connect is Dongara's only locally owned and operated small group tour & transport provider. They offer off-the-beaten-track experiences for both visitors & locals alike who are seeking meaningful connections with people, places and produce in the Midwest region of Western Australia.

Experience an all inclusive 3-day/2-night Farm Stay at Lindum in the Midwest. The highlights of the tour include visits to Mingenew, Carnamah, Perenjori, Morawa & Canna, Mingenew Bakery, the Tractor Museum, North Midlands Project and Coalseam Conservation Park.

Key Features

- History, Food & Culture
- Local Sightseeing
- Seasonal Wildflower Tours
- Multi-night Farm & Station Stays

Find out more!



Contact Details

Elyce Tunbridge, Owner

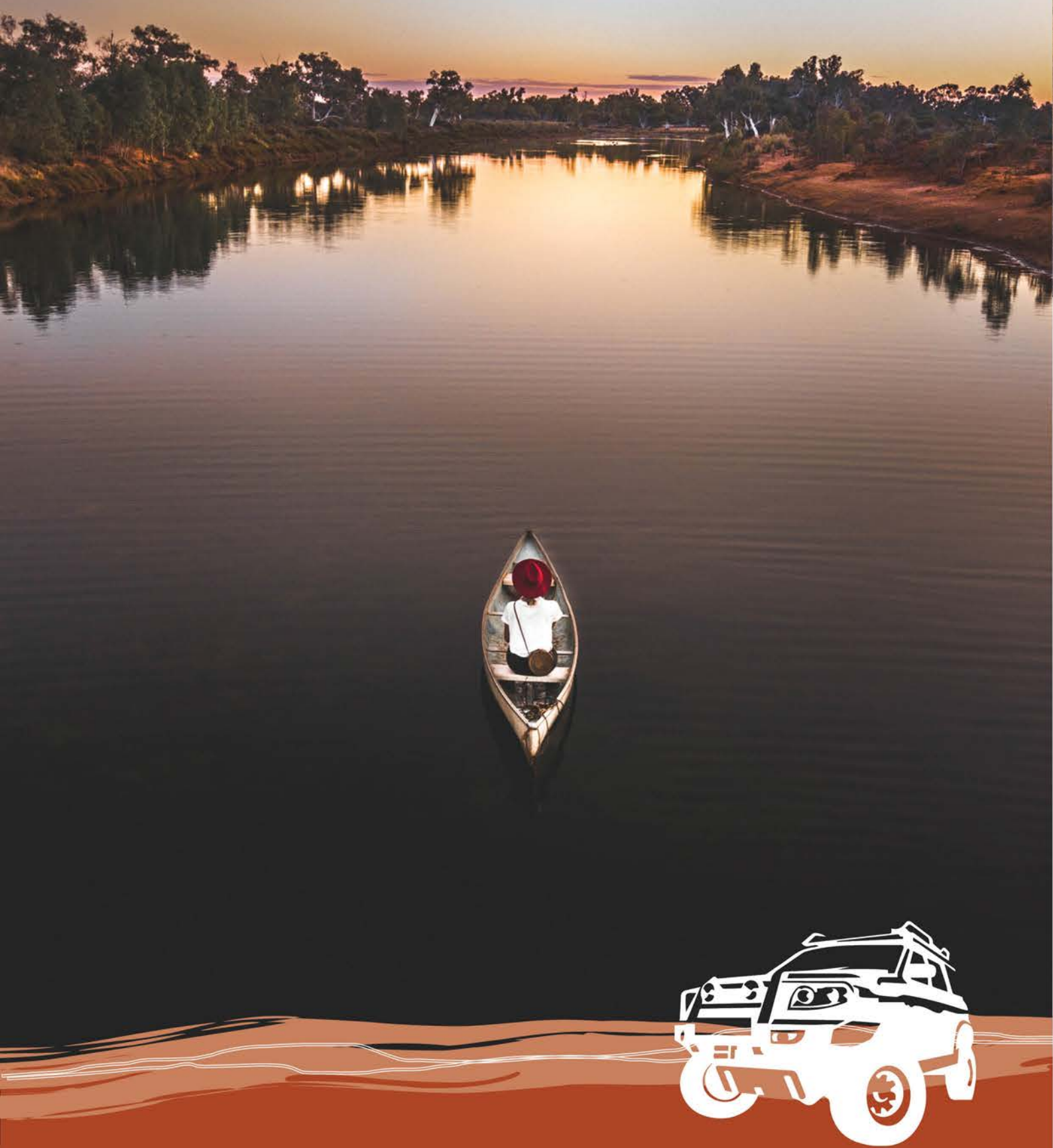
P: +61 474 922 552 E: hello@newleafconnect.com.au W: newleafconnect.com.au



📍 BILUNG POOL

REGION WIDE

Trape Ready Product →



Accommodation

Tour Operator

GREAT SOUTHERN OUTBACK TOURS AND ACCOMMODATION

📍 113 Riverside Drive, Kalgan WA 6330



Escape to the country and experience the Great Southern Outback in intimate, boutique small group safari style tours to a range of outback locations. Great Southern Outback Tours & Accommodation are a privately owned, bespoke outback touring company, located in the beautiful Kalgan River valley, near the port city of Albany.

Guests can book off-the-beaten-track adventures, discovering the glorious rural landscapes of WA's south east, from the rugged coastal cliffs of the Southern Ocean to the pioneering Goldfields and all points in-between. It's extraordinary country out there in WA's outback, with wide open spaces and clear nights offering an outstanding view of the stars. They've created tours that combine a little of everything, from meeting local farmers and seeing amazing wildlife to contemplating both colonial and Aboriginal history and culture.

None of the well-trod tourist trail! These tours go off-road and into the heart of rural communities, as that's where the REAL stories are found.

Key Features

- **Guided Tours:** Firange from one to fifteen days in length, visiting destinations across the south west, wheatbelt and goldfields regions including Albany, Katanning, Newdegate, Wave Rock, Kalgoorlie, Leonora, Hopetoun, Esperance and Norseman and many places in between!
- **Accommodation:** The Grange on Kalgan is a unique family run farm set in a fresh country setting located 22kms from the City of Albany where visitors can enjoy the stunning vistas, farm animals and landscaped gardens set in a delightful location overlooking the Kalgan River Valley.

Find out more!



CONTACT DETAILS

Wayne Monks, Owner

P: +61 499 113 193 E: wmonks@westnet.com.au W: greatsouthernoutback.com.au

Accommodation



KARIJINI ECO RETREAT

♀ National Park, Savannah Campground,
off Weano Rd, Karijini WA 6751

Karijini Eco Retreat is one of Australia's leading eco-tourism attractions. Situated 1,500km north of Perth in WA's second largest national park, the retreat offers safari-style eco tents, cabins and campsites nestled amongst native bushland at the edge of Joffre Gorge (Jijingunha), along with an outback restaurant and bar, and access to the park's walks and guided adventure tours.

Stay under the stars in the campground, or in comfortable glamping accommodation at the first and only facility to offer a glamping experience in the Karijini National Park.

Explore a wonderland of ancient natural landscapes formed more than two billion years ago – deep gorges, red cliffs, towering waterfalls and emerald green waterholes, while experiencing a taste of genuine mateship and friendly hospitality.

Key Features

- Eco Cabins
- Standard Eco Tents
- Deluxe Eco Tents
- Luxury Eco Tents
- Unpowered campsites
- Onsite restaurant and bar
- Onsite kiosk and tour desk
- Ensuities or shared bathrooms
- Picnic lunches available
- Bush kitchen
- Walking tracks

Find out more!

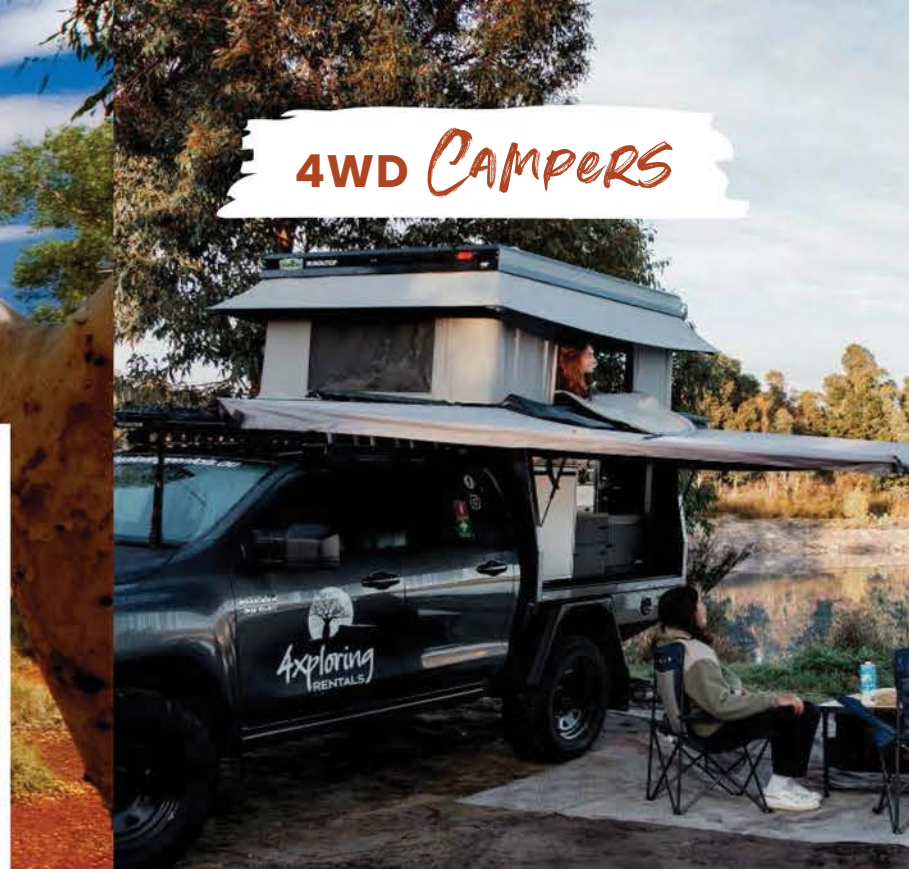


CONTACT DETAILS

Kate McCann, Director of Sales

P: +61 477 014 909 E: marketing@mackerelislans.com.au W: karijiniecoretreat.com.au

4WD CAMPERS



4XPLORING

♀ Unit 1/1 Murphy St, O'Connor WA 6163

4xploring Rentals supplies clients with extremely capable, premium four-wheel drive vehicles. Fitted out with industry-leading technologies and accessories, the features enable clients to explore more and travel further.

As well as offering fully fitted out four wheel drives, they have family-sized dual-fold camper trailers, off-grid ready and built for off-road. These boast features that make it the premium product in its class, allowing you to enjoy life off the grid for longer.

Key Features

- **4WD Camper and Rooftop Tent Inclusions:** Rooftop tent, Bedding and towels Shower, Table and chairs, Gas BBQ cooker Upright fridge, Water tank, Built in camp lights Personal Location Beacon
- **Camper Trailer Inclusions:** Two spare tyres, 200L water capacity, 10L Diesel heater, 95L dual-zone fridge/freezer Twin 9kg gas bottles, Full slide out kitchen Bedding and towels Indoor dinette seating

Find out more!



CONTACT DETAILS

Stefan Cole, Operations Manager

P: +61 417 569 996 E: stefan@4xploringrentals.au W: 4xploringrentals.au

4WD CAMPERS



REDSANDS CAMPERS

📍 113 Riverside Drive, Kalgan WA 6330

RedSands offers 2 and 5 Person 4WD Campers, designed around the reliable and robust Toyota Hilux, individually customised with high-quality rooftop tents and fully-equipped camp kitchens. RedSands Campers also offers 4WD Toyota Land Cruiser Prado's, perfect for adventurers who love touring but prefer to stay in fixed accommodation.

RedSands provide premium quality 4WD vehicles, where everything is included and there are no one-way fees. Guests can access remote locations, yet never be on their own, with personal service every kilometre. Just pack clothes, food and drinks and the ultimate adventure awaits.

Depots are located in Perth, Broome, Darwin and Adelaide.

RedSands Campers offers a truly memorable holiday experience across Western Australia.

Key Features

- **2 & 5 Person 4WD Camper Inclusions:** Rooftop tent, Bedding and towels, Shower, Fully equipped kitchen, Table and chairs, 40L Engel fridge, 80L Water tank, LED lighting and USB charging ports, Personal Location Beacon.
- **4WD Landcruiser Prado Inclusions:** All terrain tyres plus, Two spare tyres, Satellite navigation system, 4WD map and atlas, Snorkel, Sun awning, Chairs for each travelling passenger, Under bonnet air compressor, Dual battery system, 32 Litre Engel fridge.

Find out more!

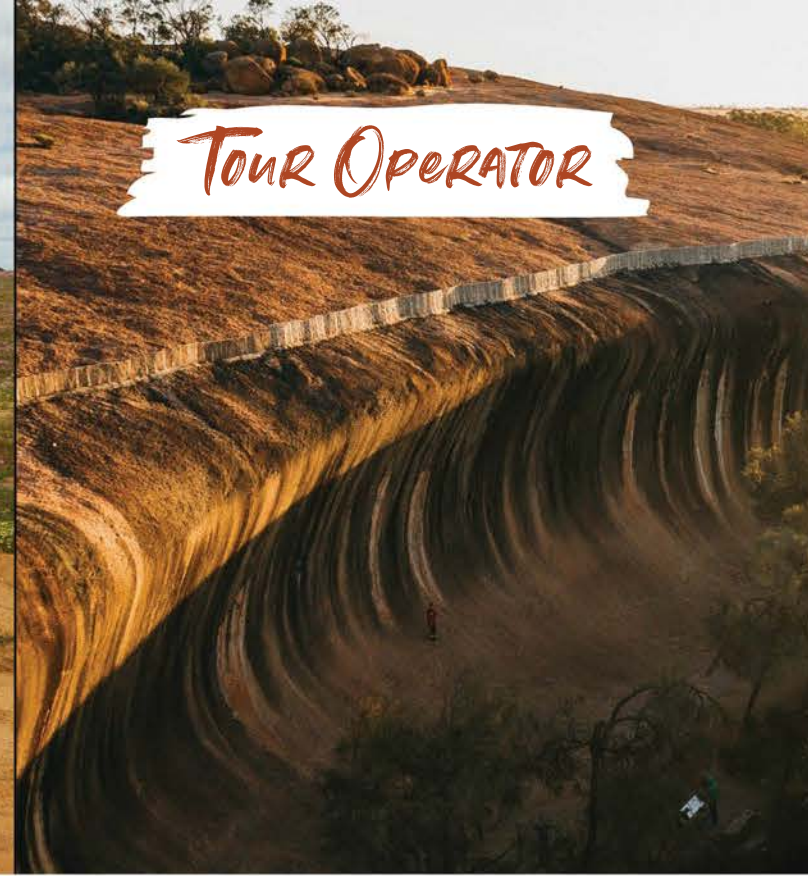


CONTACT DETAILS

Adam Sands, Managing Director

P: +61 408 222 945 E: adam@redsandscampers.com.au W: redsandscampers.com

TOUR OPERATOR



AUSTRALIAN PINNACLE TOURS

📍 Shop 1 Barrack Street Jetty, Perth WA 6000

Australian Pinnacle Tours specialises in luxury coaches and four-wheel drive services with state-of-the-art facilities.

They visit all the must-see destinations in Western Australia, showcasing the best of the beautiful state - the iconic and unique landscapes and attractions. There is no shortage of incredible adventures, amazing deals and epic road trips.

Key Experiences

- **Wave Rock Tour:** The journey starts in Perth, heading through the Perth Hills and enter farming country. From the historic town of York, the coach travel the Wheatbelt Highway through the agricultural towns of Corrigin and Kondinin, through outback farming country. The last spot is to see the spectacular prehistoric rock formation of Wave Rock and sacred Aboriginal sites.

Find out more!



CONTACT DETAILS

Graeme Skeggs, Manager

P: +61 8 6270 6060 E: graeme.skeggs@pinnacletravelgroup.com.au W: australianpinnacletraveltours.com.au

Tour Operator



INSTYLE ADVENTURES

📍 9 Leichhardt Pl, Broome WA 6725

InStyle Adventures is a family owned boutique tour operator specialising in private guided luxury four wheel drive journeys throughout the North West region, with a new tour now out for the South Coast of WA.

The fully guided 10-day WA Golden Outback and South West tour is available for small-groups (max. eight guests). Starting from Perth, the round trip takes guests to destinations throughout the Wheatbelt, Southern Coast and South West of WA to explore the beautiful natural, historical and cultural experiences the regions have to offer.

InStyle Adventures offer a truly unique experience, with Australia's most experienced guides, some of the region's finest accommodation, authentic local characters, whilst experiencing and learning about the culture of this incredible land.

Key Features

- Handpicked accommodation
- Unique gourmet experiences
- Helicopter flight to Woody Island and exploration of the local wildlife
- Entry to Cape Le Grand National Park
- Tour around Wave Rock and Mulka's Cave in Hyden
- Entry to Fitzgerald River National Park
- Guided cultural and bush food walking tour led by an Aboriginal Traditional Owner

Find out more!



CONTACT DETAILS

Ed Bennett, Owner Operator

P: +61 8 9192 6039 E: ed@instyleadventures.com.au W: instyleadventures.com.au

Tour Operator



LUXURY OUTBACK TOURS

📍 PO Box 362, Claremont WA 6910

Proudly Western Australia's ultimate personalised small group luxury eco tour operator. Based in Perth we operate personalised small group luxury 4WD tours to: Esperance, Kalgoorlie and Wave Rock as well as other key Western Australian destinations.

Day Tours include morning tea, lunch, entry fees and experiences. Extended Tours include lunch, dinner, bed and breakfast, entry fees and experiences. Luxury Land Rover Discovery 4WD vehicles (maximum 6) offer passenger comfort, generous viewing windows for excellent vision out of the vehicles and spacious seats. Equipped with air-conditioning, first aid kits, and satellite phones for guest safety.

Tours can be personalised to suit guest requirements. Drivers are local accredited guides that have years of local and regional knowledge and experience. Specialising in heritage, history, local aboriginal culture, natural history, flora and fauna, food and wine, and in depth knowledge of Western Australia.

Key Experiences

- **Wildflower Tours:** A selection of week long tours that visits key wildflower destinations including Dryandra National Park, Narrogin, Fitzgerald River National Park, Wooleen Station or Dalwallinu.
- **Esperance 4 Day Tour:** Explores Esperance and the golden outback including Cape Le Grand National Park, Lake Hillier, Lucky Bay, Wheatbelt salt lakes, Wave Rock and Lake Dumbleyung.
- **Southern Edge Discovery:** This mega 12 day tour explores the Goldfields, Esperance and the South West regions. Key Golden Outback destinations include Kalgoorlie, Coolgardie, Ravensthorpe and Esperance.

Find out more!



CONTACT DETAILS

Sylvia Mills, Owner

P: +61 429 385 642 E: info@luxuryoutbacktours.com.au W: luxuryoutbacktours.com.au

THE ROAD TO

Wildflowers

[BACK TO CONTENTS](#)

Hit the road and admire the magic of wildflower season in Western Australia's Golden Outback, from endless inland plains to remote and rugged coast.

As late winter and early spring approach, the vast outback springs to life with over 12,000 varieties of wildflowers erupting from the earth. A myriad colours studded across sweeping plains herald the onset of spring. A wet winter, especially in the north, enhances this spectacle. From late July, as the season moves south, landscapes from golden canola fields to flower-studded cliffs beckon visitors to revel in their beauty. One of the most immersive ways to do so is on a self-drive wildflower trail, which wind their way around the region, offering an array of sights. Most are 2WD accessible, with accommodation options like farm stays and station stays welcoming travellers along the way.

In the Gascoyne-Murchison region, wildflower season starts as early as July. Here, mulla mulla, sturt desert pea, and a host of other flowers thrive. The nine-day

Road to the Rock road trip is the ultimate way to take in the region and its floral delights. Must-experience highlights of the route include the majestic Mount Augustus adorned with wildflowers, colourful trails along the Gascoyne River, plus the gushing waterfalls and gorges of Kennedy Ranges.

By August, the wildflower season is ablaze across the Wheatbelt, in all its glory. Travelers are greeted by golden canola fields, the coveted wreath flower and a vast array of delicate orchids — from startling white sugar orchids and sunshine-hued cowslip orchids, to the incredible greens and reds of the many spider orchids. Make your way through the northern Wheatbelt towns such as Wubin, Buntine Rock, Latham, Caron Dam and Perenjori — renowned for dense blooms. Expect to admire carpets of everlastings, the unique and distinctive wreath flower, bright pink native

foxgloves, many species of orchids, grevillea, acacia, purple darwinia and dampiera, thriptomene and many more distinctive wildflowers.

In the northeast, take your time meandering the many towns, from Wyalkatchem with its melaleuca and verticordia, to Wongan Hills with its Koorda rose, tinsel lily and delicate orchids. View a rich array of flora, extraordinary rock formations and ancient Aboriginal history along the way.

In the southeastern Wheatbelt, the diversity of wildflowers will inspire all. Explore the region's salt lakes; picnic at Australia's third-largest monolith, Kokerbin Rock; hunt for the holy grail of wildflowers — the rare Queen of Sheba orchid; and take in sights of the iconic Wave Rock / Katter Kich, the English name chosen aptly for its uncanny shape.



Also in August, Kalgoorlie and the Goldfields come to life with wildflowers like bush tomatoes and daisies. Experience maximum regional highlights by exploring natural attractions like the Yellowdine Nature Reserve, Boorabin National Park, the heritage-listed Niagara Dam, and Lake Ballard — with its striking Anthony Gormley sculptures amid the swathes of wattles. From Merredin to Kalgoorlie, the highway is bursting with blooms. Admire the flame grevillea, grass leaf hakea and Roe's featherflower, as well as a collection of semi-arid banksias including the rare Lullfitz's banksia. By late August, the wildflower season reaches Esperance and the Fitzgerald Coast. Hopetoun is the gateway to Fitzgerald River National Park — a UNESCO World Biosphere Reserve with 1,800 types of spectacular plant species, like banksia, coneflowers, starflowers, smokebushes and numerous orchids. You may even spot to rare royal and pincushion hakeas. Noteworthy eye-candy includes the qualup bells in Ravensthorpe and picturesque views of flower fields from Frenchman Peak in the Cape Le Grand National Park. Set to the backdrop of the vast blue sea, this is a breathtaking area to admire native blooms.

CONTACT US

Our mission is to increase visitor numbers to the region, extend the average length of stay and encourage visitor spending.

Australia's Golden Outback (AGO) is the recognised marketing organisation under the umbrella of Tourism Western Australia (TWA) and has the specific task of marketing and undertaking promotional activities that will establish the region as a highly desirable tourism destination for intrastate, interstate and international visitors. Other objectives include, managing stakeholder contributions to achieve the maximum and most efficient marketing outcomes for the region and working with industry partners and stakeholders to ensure that all issues of infrastructure and development, tourism-related communication and business opportunities of the region are best achieved.

Marcus Falconer, CEO

 ceo@goldenoutback.com

 +61 428 109 001

australiasgoldenoutback.com

FIND US ON



[@australiasgoldenoutback](https://www.instagram.com/australiasgoldenoutback)

